

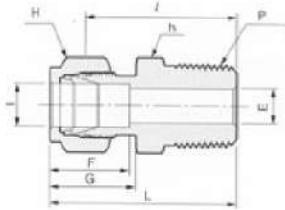
Male Connector AVMC

Fractional Tube to Female NPT Thread

Part No.	Tube O.D. T		P (NPT)	E Min	h		H		F	G	I	L
	in	mm			in	mm	in	mm				
2AVMC-2N	1/8	3.17	1/8	2.3	7/16	11.11	7/16	11.11	12.7	15.2	23.9	30.5
2AVMC-4N	1/8	3.17	1/4	2.3	9/16	14.28	7/16	11.11	12.7	15.2	29.0	35.6
2AVMC-6N	1/8	3.17	3/8	2.3	11/16	17.46	7/16	11.11	12.7	15.2	29.2	35.8
2AVMC-8N	1/8	3.17	1/2	2.3	7/8	22.22	7/16	11.11	12.7	15.2	35.6	42.2
3AVMC-2N	3/16	4.76	1/8	3.0	7/16	11.11	1/2	12.70	13.7	16.0	24.7	31.2
3AVMC-4N	3/16	4.76	1/4	3.0	9/16	14.28	1/2	12.70	13.7	16.0	29.7	36.3
4AVMC-2N	1/4	6.35	1/8	4.8	1/2	12.70	9/16	14.28	15.2	17.8	25.4	32.8
4AVMC-4N	1/4	6.35	1/4	4.8	9/16	14.28	9/16	14.28	15.2	17.8	30.5	37.8
4AVMC-6N	1/4	6.35	3/8	4.8	11/16	17.46	9/16	14.28	15.2	17.8	31.0	38.4
4AVMC-8N	1/4	6.35	1/2	4.8	7/8	22.22	9/16	14.28	15.2	17.8	37.4	44.7
4AVMC-12N	1/4	6.35	3/4	4.8	1-1/16	26.98	9/16	14.28	15.2	17.8	38.9	46.2
5AVMC-2N	5/16	7.93	1/8	4.8	9/16	14.28	5/8	15.87	16.3	18.5	26.7	34.0
5AVMC-4N	5/16	7.93	1/4	6.4	9/16	14.28	5/8	15.87	16.3	18.5	31.3	38.6
5AVMC-6N	5/16	7.93	3/8	6.4	11/16	17.46	5/8	15.87	16.3	18.5	31.8	39.1
6AVMC-2N	3/8	9.52	1/8	4.8	5/8	15.87	11/16	17.46	16.8	19.3	28.0	35.3
6AVMC-4N	3/8	9.52	1/4	6.5	5/8	15.87	11/16	17.46	16.8	19.3	32.5	39.9
6AVMC-6N	3/8	9.52	3/8	7.0	11/16	17.46	11/16	17.46	16.8	19.3	32.5	39.9
6AVMC-8N	3/8	9.52	1/2	7.0	7/8	22.22	11/16	17.46	16.8	19.3	38.9	46.2
6AVMC-12N	3/8	9.52	3/4	7.0	1-1/16	26.98	11/16	17.46	16.8	19.3	40.4	47.8
8AVMC-2N	1/2	12.70	1/8	4.8	13/16	20.63	7/8	22.22	22.9	21.8	28.7	38.9
8AVMC-4N	1/2	12.70	1/4	6.5	13/16	20.63	7/8	22.22	22.9	21.8	33.3	43.4
8AVMC-6N	1/2	12.70	3/8	10.0	13/16	20.63	7/8	22.22	22.9	21.8	33.3	43.4
8AVMC-8N	1/2	12.70	1/2	10.0	7/8	22.22	7/8	22.22	22.9	21.8	38.9	49.0
8AVMC-12N	1/2	12.70	3/4	10.0	1-1/16	26.98	7/8	22.22	22.9	21.8	40.4	50.5
8AVMC-16N	1/2	12.70	1	10.0	1-3/8	34.92	7/8	22.22	22.9	21.8	47.0	57.2
10AVMC-6N	5/8	15.87	3/8	10.0	15/16	23.81	1	25.40	24.4	21.8	34.0	44.2
10AVMC-8N	5/8	15.87	1/2	12.0	15/16	23.81	1	25.40	24.4	21.8	38.9	49.0
10AVMC-12N	5/8	15.87	3/4	12.0	1-1/16	26.98	1	25.40	24.4	21.8	40.4	50.5
12AVMC-8N	3/4	19.05	1/2	12.0	1-1/16	26.98	1-1/8	28.57	24.4	21.8	40.4	50.5
12AVMC-12N	3/4	19.05	3/4	16.0	1-1/16	26.98	1-1/8	28.57	24.4	21.8	40.0	50.5
12AVMC-16N	3/4	19.05	1	16.0	1-3/8	34.92	1-1/8	28.57	24.4	21.8	47.0	57.2
14AVMC-12N	7/8	22.22	3/4	16.0	1-3/16	30.16	1-1/4	31.75	25.9	21.8	40.4	50.5
14AVMC-16N	7/8	22.22	1	18.0	1-3/8	34.92	1-1/4	31.75	25.9	21.8	47.0	57.2
16AVMC-8N	1	25.40	1/2	12.0	1-3/8	34.92	1-1/2	38.10	31.2	26.4	45.2	57.4
16AVMC-12N	1	25.40	3/4	16.0	1-3/8	34.92	1-1/2	38.10	31.2	26.4	45.2	57.4
16AVMC-16N	1	25.40	1	22.0	1-3/8	34.92	1-1/2	38.10	31.2	26.4	50.0	62.2



All dimensions are for reference only, and are subject to change without prior notice.
 Sizes and types other than those featured above are available on request.



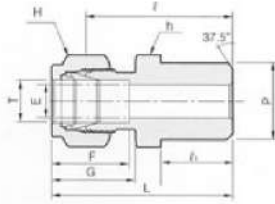
Male Connector AVMC

Metric Tube to Female ISO Tapered Thread

Part No.	Tube O.D. T (mm)	P (PT)	E Min	h	H	F	G	I	L
M3AVMC-2R	3	1/8	2.3	11.1	11.1	12.9	15.3	23.1	29.7
M3AVMC-4R	3	1/4	2.3	14.3	11.1	12.9	15.3	29.0	35.6
M4AVMC-2R	4	1/8	2.3	11.1	12.7	13.7	16.1	24.6	31.2
M4AVMC-4R	4	1/4	2.3	14.3	12.7	13.7	16.1	29.7	36.3
M6AVMC-2R	6	1/8	4.8	12.7	14.3	15.3	17.7	25.4	32.8
M6AVMC-4R	6	1/4	4.8	14.3	14.3	15.3	17.7	30.2	37.6
M6AVMC-6R	6	3/8	4.8	17.5	14.3	15.3	17.7	31.0	38.4
4M6AVMC-8R	6	1/2	4.8	22.2	14.3	15.3	17.7	36.6	44.0
M8AVMC-2R	8	1/8	4.8	14.3	15.9	16.2	18.6	26.7	34.2
M8AVMC-4R	8	1/4	6.4	14.3	15.9	16.2	18.6	31.2	38.7
M8AVMC-6R	8	3/8	6.4	17.5	15.9	16.2	18.6	31.8	39.2
M8AVMC-8R	8	1/2	6.4	22.2	15.9	16.2	18.6	37.3	44.8
M10AVMC-2R	10	1/8	4.8	17.5	19.1	17.2	19.5	28.7	36.3
M10AVMC-4R	10	1/4	6.4	17.5	19.1	17.2	19.5	33.3	40.9
M10AVMC-6R	10	3/8	8.0	17.5	19.1	17.2	19.5	33.3	40.9
M10AVMC-8R	10	1/2	8.0	22.2	19.1	17.2	19.5	38.1	45.7
M12AVMC-4R	12	1/4	6.4	20.6	22.2	22.8	22.0	33.3	43.4
M12AVMC-6R	12	3/8	10.0	20.6	22.2	22.8	22.0	33.3	43.4
M12AVMC-8R	12	1/2	10.0	22.2	22.2	22.8	22.0	38.1	48.2
M12AVMC-12R	12	3/4	10.0	27.0	22.2	22.8	22.0	38.9	49.0
M15AVMC-8R	15	1/2	12.0	23.8	25.4	24.4	22.0	38.9	49.0
M16AVMC-4R	16	1/4	6.4	23.8	25.4	24.4	22.0	34.0	44.1
M16AVMC-6R	16	3/8	10.0	23.8	25.4	24.4	22.0	34.0	44.1
M16AVMC-8R	16	1/2	12.0	23.8	25.4	24.4	22.0	38.9	49.0
M16AVMC-12R	16	3/4	12.0	27.0	25.4	24.4	15.3	38.9	49.0
M18AVMC-8R	18	1/2	12.0	27.0	30.2	24.4	22.0	40.4	50.5
M18AVMC-12R	18	3/4	15.0	27.0	30.2	24.4	22.0	40.4	50.5
M20AVMC-8R	20	1/2	12.0	30.2	31.8	26.0	22.0	42.2	52.3
M20AVMC-12R	20	3/4	16.0	30.2	31.8	26.0	22.0	42.2	52.3
M22AVMC-12R	22	3/4	16.0	30.2	31.8	26.0	22.0	42.2	52.3
M22AVMC-16R	22	1	18.0	34.9	31.8	26.0	22.0	47.8	57.9
M25AVMC-12R	25	3/4	16.0	34.9	38.1	31.3	26.5	45.2	57.9
M25AVMC-16R	25	1	22.0	34.9	38.1	31.3	26.5	50.0	62.3



All dimensions are for reference only, and are subject to change without prior notice.
 Sizes and types other than those featured above are available on request.



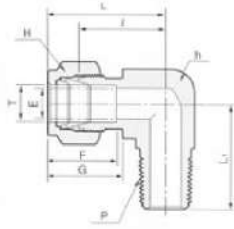
Male Pipe Weld Connector AVPCW

Part No.	Tube O.D. T		Pipe Weld Size (P)		E Min	h		H		F	G	I	I ₁	L
	in	mm	Nom	O.D.		in	mm	in	mm					
2AVPCW-2P	1/8	3.17	1/8	10.30	2.3	7/16	11.11	7/16	11.11	12.7	15.2	23.9	9.7	30.5
3AVPCW-2P	3/16	4.76	1/8	10.30	3.0	7/16	11.11	1/2	12.70	13.7	16.0	24.6	9.7	31.2
4AVPCW-2P	1/4	6.35	1/8	10.30	4.8	1/2	12.70	9/16	14.28	15.2	17.8	25.4	9.7	32.8
4AVPCW-4P	1/4	6.35	1/4	13.70	4.8	9/16	14.28	9/16	14.28	15.2	17.8	30.5	14.2	37.8
5AVPCW-2P	5/16	7.93	1/8	10.30	4.8	9/16	14.28	5/8	15.87	16.3	18.5	26.7	9.7	34.0
5AVPCW-4P	5/16	7.93	1/4	13.70	6.4	9/16	14.28	5/8	15.87	16.3	18.5	31.2	14.2	38.6
6AVPCW-4P	3/8	9.52	1/4	13.70	7.0	5/8	15.87	11/16	17.46	16.8	19.3	32.5	14.2	39.9
6AVPCW-6P	3/8	9.52	3/8	17.10	7.0	11/16	17.46	11/16	17.46	16.8	19.3	32.5	14.2	39.9
6AVPCW-8P	3/8	9.52	1/2	21.30	7.0	7/8	22.22	11/16	17.46	16.8	19.3	38.9	19.1	46.2
8AVPCW-6P	1/2	12.70	3/8	17.10	10.0	13/16	20.63	7/8	22.22	22.9	21.8	33.3	14.2	43.4
8AVPCW-8P	1/2	12.70	1/2	21.30	10.0	7/8	22.22	7/8	22.22	22.9	21.8	38.9	19.1	49.0
8AVPCW-12P	1/2	12.70	3/4	26.67	10.0	1-1/16	26.98	7/8	22.22	22.9	21.8	40.4	19.1	50.5
10AVPCW-8P	5/8	15.87	1/2	21.30	12.0	15/16	23.81	1	25.40	24.4	21.8	38.9	19.1	49.0
12AVPCW-12P	3/4	19.05	3/4	26.67	16.0	1-1/16	26.98	1-1/8	28.57	24.4	21.8	40.4	19.1	50.5
16AVPCW-16P	1	25.40	1	33.40	22.0	1-3/8	34.92	1-1/2	38.10	31.2	26.4	50.0	23.9	62.2

Part No.	Tube O.D. T	Pipe Weld Size (P)		E Min	h	H	A	B	I	I ₁	L
		Nom	O.D.								
M3AVPCW-2P	3	1/8	10.3	2.3	11.1	11.1	12.9	15.3	23.1	9.7	29.7
M4AVPCW-2P	4	1/8	10.3	2.3	11.1	12.7	13.7	16.1	24.1	9.7	30.7
M6AVPCW-2P	6	1/8	10.3	4.8	12.7	14.3	15.3	17.7	25.4	9.7	32.8
M6AVPCW-4P	6	1/4	13.7	4.8	14.3	14.3	15.3	17.7	30.2	14.2	37.6
M8AVPCW-2P	8	1/8	10.3	4.8	14.3	15.9	16.2	18.6	26.7	9.7	34.2
M8AVPCW-4P	8	1/4	13.7	6.4	14.3	15.9	16.2	18.6	31.2	14.2	38.7
M8AVPCW-8P	8	1/2	21.3	6.4	22.2	15.9	16.2	18.6	37.3	19.0	44.8
M10AVPCW-4P	10	1/4	13.7	7.0	17.5	19.1	17.2	19.5	33.3	14.2	40.9
M10AVPCW-6P	10	3/8	17.1	8.0	17.5	19.1	17.2	19.5	32.5	14.2	40.1
M10AVPCW-8P	10	1/2	21.3	8.0	22.2	19.1	17.2	19.5	38.1	19.0	45.7
M12AVPCW-4P	12	1/4	13.7	7.0	22.2	22.2	22.8	22.0	33.3	14.2	43.4
M12AVPCW-6P	12	3/8	17.1	10.0	20.6	22.2	22.8	22.0	33.3	14.2	43.4
M12AVPCW-8P	12	1/2	21.3	10.0	22.2	22.2	22.8	22.0	38.1	19.0	48.2
M15AVPCW-8P	15	1/2	21.3	12.0	23.8	25.4	24.4	22.0	38.9	19.0	49.0
M16AVPCW-8P	16	1/2	21.3	12.0	23.8	25.4	24.4	22.0	38.9	19.0	49.0
M18AVPCW-8P	18	1/2	21.3	12.0	27.0	30.2	24.4	22.0	40.4	19.0	50.5



All dimensions are for reference only, and are subject to change without prior notice.
 Sizes and types other than those featured above are available on request.



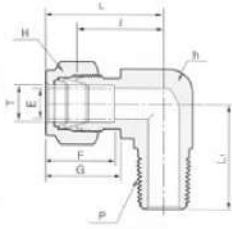
Male Elbow AVME

Fractional Tube to Female NPT

Part No.	Tube O.D. T		P (NPT)	E Min	h		H		F	G	I	L	L ₁
	in	mm			in	mm	in	mm					
2AVME-2N	1/8	3.17	1/8	4.8	7/16	11.11	7/16	11.11	12.7	15.2	17.0	23.6	17.8
2AVME-4N	1/8	3.17	1/4	4.8	1/2	12.70	7/16	11.11	12.7	15.2	18.0	24.6	23.4
3AVME-2N	3/16	4.76	1/8	4.8	7/16	11.11	1/2	12.70	13.7	16.0	18.8	25.4	18.8
3AVME-4N	3/16	4.76	1/4	4.8	1/2	12.70	1/2	12.70	13.7	16.0	18.8	25.4	23.4
4AVME-2N	1/4	6.35	1/8	4.8	1/2	12.70	9/16	14.28	15.2	17.8	19.6	26.9	18.8
4AVME-4N	1/4	6.35	1/4	4.8	1/2	12.70	9/16	14.28	15.2	17.8	19.6	26.9	23.4
4AVME-6N	1/4	6.35	3/8	4.8	11/16	17.46	9/16	14.28	15.2	17.8	22.4	29.7	26.2
4AVME-8N	1/4	6.35	1/2	4.8	13/16	20.63	9/16	14.28	15.2	17.8	24.4	31.8	33.0
5AVME-2N	5/16	7.93	1/8	6.4	9/16	14.28	5/8	15.87	16.3	18.5	21.3	28.7	19.8
5AVME-4N	5/16	7.93	1/4	6.4	9/16	14.28	5/8	15.87	16.3	18.5	21.3	28.7	24.4
5AVME-6N	5/16	7.93	3/8	6.4	11/16	17.46	5/8	15.87	16.3	18.5	23.1	30.5	26.2
6AVME-2N	3/8	9.52	1/8	4.8	5/8	15.87	11/16	17.46	16.8	19.3	23.1	30.5	20.8
6AVME-4N	3/8	9.52	1/4	6.5	5/8	15.87	11/16	17.46	16.8	19.3	23.1	30.5	25.4
6AVME-6N	3/8	9.52	3/8	7.0	11/16	17.46	11/16	17.46	16.8	19.3	23.9	31.2	26.2
6AVME-8N	3/8	9.52	1/2	7.0	13/16	20.63	11/16	17.46	16.8	19.3	25.9	33.5	33.0
6AVME-12N	3/8	9.52	3/4	7.0	1-1/16	26.98	11/16	17.46	16.8	19.3	29.7	37.1	36.8
8AVME-4N	1/2	12.70	1/4	6.5	13/16	20.63	7/8	22.22	22.9	21.8	25.9	36.1	28.2
8AVME-6N	1/2	12.70	3/8	10.0	13/16	20.63	7/8	22.22	22.9	21.8	25.9	36.1	28.2
8AVME-8N	1/2	12.70	1/2	10.0	13/16	20.63	7/8	22.22	22.9	21.8	25.9	36.1	33.0
8AVME-12N	1/2	12.70	3/4	10.0	1-1/16	26.98	7/8	22.22	22.9	21.8	29.7	39.9	36.8
10AVME-6N	5/8	15.87	3/8	10.0	15/16	23.80	1	25.40	24.4	21.8	27.9	38.1	30.2
10AVME-8N	5/8	15.87	1/2	12.0	15/16	23.80	1	25.40	24.4	21.8	27.9	38.1	35.1
10AVME-12N	5/8	15.87	3/4	12.0	1-1/16	26.98	1	25.40	24.4	21.8	29.7	39.9	36.8
12AVME-8N	3/4	19.05	1/2	12.0	1-1/16	26.98	1-1/8	28.57	24.4	21.8	29.7	39.9	36.8
12AVME-12N	3/4	19.05	3/4	16.0	1-1/16	26.98	1-1/8	28.57	24.4	21.8	29.7	39.9	36.8
14AVME-12N	7/8	22.22	3/4	16.0	1-1/4	31.75	1-1/4	31.75	25.9	21.8	34.5	44.7	41.7
16AVME-12N	1	25.40	3/4	16.0	1-3/8	34.92	1-1/2	38.10	31.2	26.4	36.8	49.0	41.7
16AVME-16N	1	25.40	1	22.0	1-3/8	34.92	1-1/2	38.10	31.2	26.4	36.8	49.0	46.5



All dimensions are for reference only, and are subject to change without prior notice.
 Sizes and types other than those featured above are available on request.



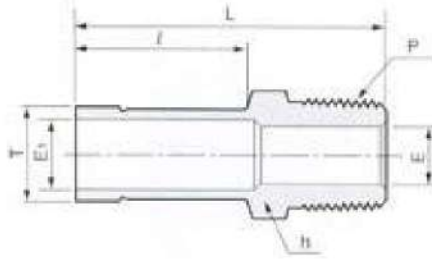
Male Elbow AVME

Metric Tube to Female ISO Tapered Thread

Part No.	O.D. T (mm)	P (PT)	E Min	h	H	F	G	I	L	L ₁
M3AVME-2R	3	1/8	2.3	11.1	11.1	12.9	15.3	17.0	23.6	17.8
M3AVME-4R	3	1/4	2.3	12.7	11.1	12.9	15.3	18.0	24.6	23.4
M4AVME-2R	4	1/8	2.3	11.1	12.7	13.7	16.1	18.8	25.4	18.8
M4AVME-4R	4	1/4	2.3	12.7	12.7	13.7	16.1	18.8	25.4	23.4
M6AVME-2R	6	1/8	4.8	12.7	14.3	15.3	17.7	19.6	27.0	18.8
M6AVME-4R	6	1/4	4.8	12.7	14.3	15.3	17.7	19.6	27.0	23.4
M6AVME-6R	6	3/8	4.8	17.5	14.3	15.3	17.7	22.4	29.8	26.2
M6AVME-8R	6	1/2	4.8	20.6	14.3	15.3	17.7	24.4	31.8	33.0
M8AVME-2R	8	1/8	4.8	14.3	15.9	16.2	18.6	21.3	28.8	19.8
M8AVME-4R	8	1/4	6.4	14.3	15.9	16.2	18.6	21.3	28.8	24.4
M8AVME-6R	8	3/8	6.4	17.5	15.9	16.2	18.6	23.9	31.4	28.5
M8AVME-8R	8	1/2	6.4	20.6	15.9	16.2	18.6	25.1	32.6	33.0
M10AVME-2R	10	1/8	4.8	17.5	19.1	17.2	19.5	23.9	31.5	23.6
M10AVME-4R	10	1/4	6.4	17.5	19.1	17.2	19.5	23.9	31.5	28.2
M10AVME-6R	10	3/8	8.0	17.5	19.1	17.2	19.5	23.9	31.5	28.2
M10AVME-8R	10	2/1	8.0	20.6	19.1	17.2	19.5	23.9	33.5	33.0
M12AVME-2R	12	1/8	4.8	20.6	22.2	22.8	22.0	25.9	36.0	23.6
M12AVME-4R	12	1/4	6.4	20.6	22.2	22.8	22.0	25.9	36.0	28.2
M12AVME-6R	12	3/8	10.0	20.6	22.2	22.8	22.0	25.9	36.0	28.2
M12AVME-8R	12	1/2	10.0	20.6	22.2	22.8	22.0	25.9	36.0	33.0
M12AVME-12R	12	3/4	10.0	27.0	22.2	22.8	22.0	29.7	39.8	36.8
M16AVME-6R	16	3/8	10.0	25.4	25.4	24.4	22.0	27.9	38.0	30.2
M16AVME-8R	16	1/2	12.0	25.4	25.4	24.4	22.0	27.9	38.0	35.1
M16AVME-12R	16	3/4	12.0	27.0	25.4	24.4	22.0	29.7	39.8	36.8
M18AVME-8R	18	1/2	12.0	27.0	30.2	24.4	22.0	29.7	39.8	35.1
M18AVME-12R	18	3/4	15.0	27.0	30.2	24.4	22.0	29.7	39.8	36.8
M20AVME-8R	20	1/2	12.0	31.8	31.8	26.0	22.0	34.5	44.6	41.7
M20AVME-12R	20	3/4	16.0	31.8	31.8	26.0	22.0	34.5	44.6	41.7
M22AVME-12R	22	3/4	16.0	31.8	31.8	26.0	22.0	34.5	44.6	41.7
M22AVME-16R	22	1	18.0	34.9	31.8	26.0	22.0	34.5	44.6	46.5
M25AVME-12R	25	3/4	16.0	34.9	38.1	31.3	26.5	36.8	49.1	41.7
M25AVME-16R	25	1	22.0	34.9	38.1	31.3	26.5	36.8	49.1	46.5



All dimensions are for reference only, and are subject to change without prior notice.
 Sizes and types other than those featured above are available on request.



Male Adapter AVMA

Fractional AVLOK Port to Female NPT Thread

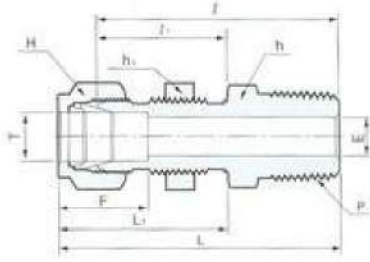
Part No.	Tube O.D.		P (NPT)	E Min	E ₁	h		l	L
	in	mm				in	mm		
2AVMA-2N	1/8	3.17	1/8	4.6	1.8	7/16	11.11	13.5	28.4
3AVMA-2N	3/16	4.76	1/8	4.6	3.0	7/16	11.11	14.2	29.2
4AVMA-2N	1/4	6.35	1/8	4.6	4.6	7/16	11.11	15.7	30.7
4AVMA-4N	1/4	6.35	1/4	4.6	4.6	9/16	14.28	15.7	35.6
5AVMA-2N	5/16	7.93	1/8	4.8	6.4	7/16	11.11	16.5	31.8
5AVMA-4N	5/16	7.93	1/4	6.4	6.4	9/16	14.28	16.5	37.1
6AVMA-4N	3/8	9.52	1/4	7.0	7.0	9/16	14.28	17.3	38.1
6AVMA-6N	3/8	9.52	3/8	7.0	7.0	11/16	17.46	17.3	38.1
6AVMA-8N	3/8	9.52	1/2	7.0	7.0	7/8	22.22	17.3	43.4
8AVMA-4N	1/2	12.70	1/4	6.5	10.0	9/16	14.28	22.9	43.4
8AVMA-6N	1/2	12.70	3/8	10.0	10.0	11/16	17.46	22.9	44.5
8AVMA-8N	1/2	12.70	1/2	10.0	10.0	7/8	22.22	22.9	49.0
10AVMA-8N	5/8	15.87	1/2	12.7	12.7	7/8	22.22	24.4	50.8
12AVMA-12N	3/4	19.05	3/4	15.0	15.0	1-1/16	26.98	24.4	51.6
14AVMA-12N	7/8	22.22	3/4	18.0	18.0	1-1/16	26.98	26.2	53.1
14AVMA-16N	1	25.40	1	22.0	22.0	1-3/8	34.92	30.7	65.0

Metric AVLOK Port to ISO Tapered Thread

Part No.	Tube O.D. T (mm)	P (NPT)	E Min	E ₁	h	l	L
M3AVMA-2R	3	1/8	4.0	1.8	11.1	13.5	29.4
M6AVMA-2R	6	1/8	4.8	4.8	11.1	15.9	31.8
M6AVMA-4R	6	1/4	4.8	4.8	14.3	15.9	36.5
M8AVMA-4R	8	1/4	6.4	6.4	14.3	16.7	37.3
M10AVMA-4R	10	1/4	6.4	6.4	14.3	17.5	38.9
M10AVMA-6R	10	3/8	8.0	8.0	17.5	17.5	39.7
M10AVMA-8R	10	1/2	12.0	8.0	22.2	17.5	45.2
M12AVMA-4R	12	1/4	6.4	9.0	14.3	23.0	45.6
M12AVMA-6R	12	3/8	9.0	9.0	17.5	23.0	45.2
M12AVMA-8R	12	1/2	12.0	9.0	22.2	23.0	50.0
M18AVMA-8R	18	1/2	12.0	14.0	22.2	24.6	53.2
M18AVMA-12R	18	3/4	16.0	14.0	27.0	24.6	53.2



All dimensions are for reference only, and are subject to change without prior notice.
 Sizes and types other than those featured above are available on request.



Bulkhead Male Connector AVBMC

Fractional Tube to Female NPT Thread

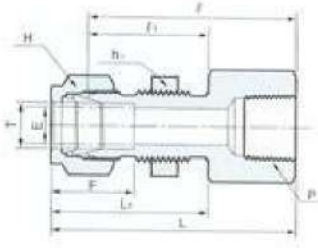
Part No.	Tube O.D.		P (NPT)	E Min	h		h1		H		F	I	I ₁	L	L ₁	Panel Hole Drill Size	Max Panel Thickness
	in	mm			in	mm	in	mm	in	mm							
2AVBMC-2N	1/8	3.17	1/8	2.3	1/2	12.70	1/2	12.70	7/16	11.11	12.70	39.9	24.6	46.5	31.2	8.3	12.7
4AVBMC-2N	1/4	6.35	1/8	4.8	5/8	15.87	5/8	15.87	9/16	14.28	15.24	42.2	26.2	49.5	33.5	11.5	10.2
4AVBMC-4N	1/4	6.35	1/4	4.8	5/8	15.87	5/8	15.87	9/16	14.28	15.24	46.0	26.2	53.3	33.5	11.5	10.2
6AVBMC-4N	3/8	9.52	1/4	6.5	3/4	19.05	3/4	19.05	11/16	17.46	16.76	50.0	29.5	57.4	36.8	14.7	11.2
8AVBMC-6N	1/2	12.70	3/8	10.0	15/16	23.81	15/16	23.81	7/8	22.22	22.86	53.1	31.8	63.2	41.9	19.4	12.7
8AVBMC-8N	1/2	12.70	1/2	10.0	15/16	23.81	15/16	23.81	7/8	22.22	22.86	58.7	31.8	68.8	41.9	19.4	12.7

Metric Tube to Female ISO Tapered Thread

Part No.	Tube O.D.		P (NPT)	E Min	h	h1	H	F	I	I ₁	L	L ₁	Panel Hole Drill Size	Max Panel Thickness
	T mm													
M3AVBMC-2R	3		1/8	2.3	12.7	12.7	11.1	12.9	39.9	24.6	46.5	31.2	8.3	12.7
M6AVBMC-2R	6		1/8	4.8	15.9	15.9	14.3	15.3	42.2	26.2	49.5	33.6	11.5	10.2
M6AVBMC-4R	6		1/4	4.8	15.9	15.9	14.3	15.3	46.0	26.2	53.3	33.6	11.5	10.2
M8AVBMC-4R	8		1/4	6.4	17.5	17.5	15.9	16.2	49.0	28.6	57.4	36.1	13.1	11.2
M12AVBMC-6R	12		3/8	10.0	23.8	23.8	22.2	22.8	53.1	31.8	63.2	41.9	19.5	12.7
M12AVBMC-8R	12		1/2	10.0	23.8	23.8	22.2	22.8	58.7	31.8	68.8	41.9	19.5	12.7



All dimensions are for reference only, and are subject to change without prior notice.
 Sizes and types other than those featured above are available on request.



Bulkhead Female Connector AVBFC

Fractional Tube to Male NPT Thread

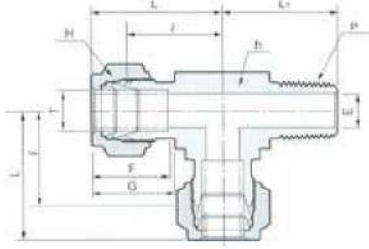
Part No.	Tube O.D. T		P (NPT)	E Min	h		h1		H		F	I	I ₁	L	L ₁	Panel Hole Drill Size	Max Panel Thickness
	in	mm			in	mm	in	mm	in	mm							
2AVBFC-2N	1/8	3.17	1/8	2.3	9/16	14.28	1/2	12.70	7/16	11.11	12.7	38.1	24.6	44.7	31.2	8.3	12.7
4AVBFC-2N	1/4	6.35	1/8	4.8	5/8	15.87	5/8	15.87	9/16	14.28	15.2	39.6	26.2	47.0	33.5	11.5	10.2
4AVBFC-4N	1/4	6.35	1/4	4.8	3/4	19.05	5/8	15.87	9/16	14.28	15.2	44.5	26.2	51.8	33.5	11.5	10.2
6AVBFC-4N	3/8	9.52	1/4	7.0	3/4	19.05	3/4	19.05	11/16	17.46	16.8	47.8	29.5	55.1	36.8	14.7	11.2
8AVBFC-6N	1/2	12.70	3/8	10.0	15/16	23.81	15/16	23.81	7/8	22.22	22.9	51.6	31.8	61.7	41.9	19.4	12.7
8AVBFC-8N	1/2	12.70	1/2	10.0	1-1/16	26.98	15/16	23.81	7/8	22.22	22.9	56.4	31.8	66.5	41.9	19.4	12.7

Metric Tube to Male ISO Tapered Thread

Part No.	Tube O.D. T mm		P (NPT)	E Min	h	h1	H	F	I	I ₁	L	L ₁	Panel Hole Drill Size	Max Panel Thickness
	mm	mm												
M3AVBFC-2R	3	3	1/8	2.3	14.3	12.7	11.1	12.9	38.1	24.6	44.7	31.2	8.3	12.7
M6AVBFC-2R	6	6	1/8	4.8	15.9	15.9	14.3	15.3	39.6	26.2	47.0	33.6	11.5	10.2
M6AVBFC-4R	6	6	1/4	4.8	19.1	15.9	14.3	15.3	44.5	26.2	51.8	33.6	11.5	10.2
M8AVBFC-4R	8	8	1/4	7.0	19.1	17.5	15.9	16.2	49.0	28.4	54.2	36.1	13.1	11.2
M12AVBFC-6R	12	12	3/8	10.0	23.8	23.8	22.2	22.8	51.6	31.8	61.7	41.9	19.5	12.7
M12AVBFC-8R	12	12	1/2	10.0	27.0	23.8	22.2	22.8	56.4	31.8	66.5	41.9	19.5	12.7



All dimensions are for reference only, and are subject to change without prior notice.
Sizes and types other than those featured above are available on request.



Male Run Tee AVMRT

Fractional Tube to Female NPT Thread

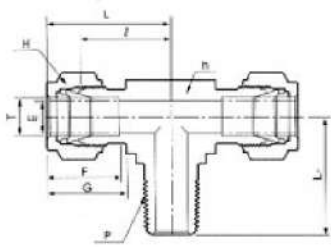
Part No.	Tube O.D. T		P (NPT)	E Min	h		H		F	G	I	L	L ₁
	in	mm			in	mm	in	mm					
2AVMRT-2N	1/8	3.17	1/8	2.3	7/16	11.11	7/16	11.11	12.70	15.2	17.0	23.6	17.8
2AVMRT-2N	1/8	3.17	1/4	2.3	1/2	12.70	7/16	11.11	12.70	15.2	18.0	24.6	23.4
3AVMRT-2N	3/16	4.76	1/8	3.0	7/16	11.11	1/2	12.70	13.71	16.0	17.8	24.4	17.8
4AVMRT-2N	1/4	6.35	1/8	4.8	1/2	12.70	9/16	14.28	15.24	17.8	19.6	26.9	18.8
4AVMRT-4N	1/4	6.35	1/4	4.8	1/2	12.70	9/16	14.28	15.24	17.8	19.6	26.9	23.4
5AVMRT-2N	5/16	7.93	1/8	4.8	9/16	14.28	5/8	15.87	16.25	18.5	22.4	29.7	20.8
6AVMRT-4N	3/8	9.52	1/4	6.5	5/8	15.87	11/16	17.46	16.76	19.3	23.1	30.5	25.4
6AVMRT-6N	3/8	9.52	3/8	7.0	11/16	17.46	11/16	17.46	16.76	19.3	25.9	33.3	28.2
8AVMRT-6N	1/2	12.70	3/8	10.0	13/16	20.63	7/8	22.22	22.86	21.8	25.9	36.1	28.2
8AVMRT-8N	1/2	12.70	1/2	10.0	13/16	20.63	7/8	22.22	22.86	21.8	25.9	36.1	33.0
10AVMRT-8N	5/8	15.87	1/2	12.0	15/16	23.80	1	25.40	24.38	21.8	27.9	38.1	35.1
12AVMRT-12N	3/4	19.05	3/4	16.0	1-1/16	26.98	1-1/8	28.57	24.38	21.8	28.2	38.4	35.3

Metric Tube to Female ISO Tapered Thread

Part No.	Tube O.D. Tmm	P (NPT)	E Min	h	H	F	G	I	L	L ₁
M3AVMRT-2R	3	1/8	2.3	11.1	11.1	12.9	15.3	17.0	23.6	17.8
M3AVMRT-4R	3	1/4	2.3	12.7	11.1	12.9	15.3	18.0	24.6	23.4
M4AVMRT-2R	4	1/8	2.3	11.1	12.7	13.7	16.1	18.8	25.4	18.8
M6AVMRT-2R	6	1/8	4.8	12.7	14.3	15.3	17.7	19.6	27.0	18.8
M6AVMRT-4R	6	1/4	4.8	12.7	14.3	15.3	17.7	19.6	27.0	23.4
M8AVMRT-2R	8	1/8	4.8	14.3	15.9	16.2	18.6	21.3	28.8	19.8
M8AVMRT-4R	8	1/4	6.4	14.3	15.9	16.2	18.6	21.3	28.8	24.4
M10AVMRT-4R	10	1/4	6.4	17.5	19.1	17.2	19.5	23.9	31.5	28.2
M10AVMRT-6R	10	3/8	8.0	17.5	19.1	17.2	19.5	23.9	31.5	28.2
M12AVMRT-4R	12	1/4	6.4	20.6	22.2	22.8	22.0	25.9	36.0	28.2
M12AVMRT-6R	12	3/8	10.0	20.6	22.2	22.8	22.0	25.9	36.0	28.2
M12AVMRT-8R	12	1/2	10.0	20.6	22.2	22.8	22.0	25.9	36.0	33.0
M16AVMRT-6R	16	3/8	10.0	25.4	25.4	24.4	22.0	27.9	38.0	30.2
M16AVMRT-8R	16	1/2	12.0	25.4	25.4	24.4	22.0	27.9	38.0	35.1
M20AVMRT-12R	20	3/4	16.0	31.8	31.8	26.0	22.0	34.5	44.6	41.7



All dimensions are for reference only, and are subject to change without prior notice.
 Sizes and types other than those featured above are available on request.



Male Branch Tee AVMBT

Fractional Tube to Female NPT Thread

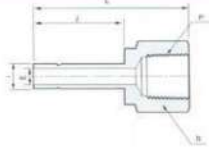
Part No.	Tube O.D.		P (NPT)	E Min	h		H		F	G	I	L	L ₁
	in	mm			in	mm	in	mm					
2AVMBT-2N	1/8	3.17	1/8	2.3	7/16	11.11	7/16	11.11	12.7	15.2	17.0	23.6	17.8
2AVMBT-2N	1/8	3.17	1/4	2.3	1/2	12.70	7/16	11.11	12.7	15.2	18.0	24.6	23.4
3AVMBT-2N	3/16	4.76	1/8	3.0	7/16	11.11	1/2	12.70	13.7	16.0	17.8	24.4	17.8
4AVMBT-2N	1/4	6.35	1/8	4.8	1/2	12.70	9/16	14.28	15.2	17.8	19.6	26.9	18.8
4AVMBT-4N	1/4	6.35	1/4	4.8	1/2	12.70	9/16	14.28	15.2	17.8	19.6	26.9	23.4
5AVMBT-2N	5/16	7.93	1/8	4.8	9/16	14.28	5/8	15.87	16.3	18.5	22.4	29.7	20.8
6AVMBT-4N	3/8	9.52	1/4	7.0	5/8	15.87	11/16	17.46	16.8	19.3	23.1	30.5	25.4
6AVMBT-6N	3/8	9.52	3/8	7.0	11/16	17.46	11/16	17.46	16.8	19.3	25.9	33.3	28.2
8AVMBT-6N	1/2	12.70	3/8	10.0	13/16	20.63	7/8	22.22	22.9	21.8	25.9	36.1	28.2
8AVMBT-8N	1/2	12.70	1/2	10.0	13/16	20.63	7/8	22.22	22.9	21.8	25.9	36.1	33.0
10AVMBT-8N	5/8	15.87	1/2	12.0	15/16	23.8	1	25.40	24.4	21.8	27.9	38.1	35.1
12AVMBT-12N	3/4	19.05	3/4	16.0	1-1/16	26.98	1-1/8	28.57	24.4	21.8	28.2	38.4	35.3

Metric Tube to Female ISO Tapered Thread

Part No.	Tube O.D. Tmm	P (NPT)	E Min	h	H	F	G	I	L	L ₁
M3AVMBT-2R	3	1/8	2.3	11.1	11.1	12.9	15.3	17.0	23.6	17.8
M3AVMBT-4R	3	1/4	2.3	12.7	11.1	12.9	15.3	18.0	24.6	23.4
M4AVMBT-2R	4	1/8	2.3	11.1	12.7	13.7	16.1	18.8	25.4	18.8
M6AVMBT-2R	6	1/8	4.8	12.7	14.3	15.3	17.7	19.6	27.0	18.8
M6AVMBT-4R	6	1/4	4.8	12.7	14.3	15.3	17.7	19.6	27.0	23.4
M8AVMBT-2R	8	1/8	4.8	14.3	15.9	16.2	18.6	21.3	28.8	19.8
M8AVMBT-4R	8	1/4	6.4	14.3	15.9	16.2	18.6	21.3	28.8	24.4
M10AVMBT-4R	10	1/4	6.4	17.5	19.1	17.2	19.5	23.9	31.5	28.2
M10AVMBT-6R	10	3/8	8.0	17.5	19.1	17.2	19.5	23.9	31.5	28.2
M12AVMBT-4R	12	1/4	6.4	20.6	22.2	22.8	22.0	25.9	36.0	28.2
M12AVMBT-6R	12	3/8	10.0	20.6	22.2	22.8	22.0	25.9	36.0	28.2
M12AVMBT-8R	12	1/2	10.0	20.6	22.2	22.8	22.0	25.9	36.0	33.0
M16AVMBT-6R	16	3/8	10.0	25.4	25.4	24.4	22.0	27.9	38.0	30.2
M16AVMBT-8R	16	1/2	12.0	25.4	25.4	24.4	22.0	27.9	38.0	35.1
M20AVMBT-12R	20	3/4	16.0	31.8	31.8	26.0	22.0	34.5	44.6	41.7



All dimensions are for reference only, and are subject to change without prior notice.
 Sizes and types other than those featured above are available on request.



Female Adapter

AVFA

Fractional Tube to Male NPT Thread

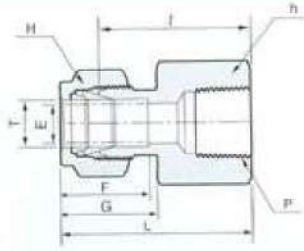
Part No.	Tube O.D.		P (NPT)	E Min	h		l	L
	in	mm			in	mm		
2AV FA-2N	1/8	3.17	1/8	1.8	9/16	14.28	13.5	31.2
2AV FA-4N	1/8	3.17	1/4	1.8	3/4	19.06	13.5	34.0
3AV FA-2N	3/16	4.76	1/8	3.0	9/16	14.28	14.2	32.0
3AV FA-4N	3/16	4.76	1/4	3.0	3/4	19.05	14.2	34.8
4AV FA-2N	1/4	6.35	1/8	4.6	9/16	14.28	15.7	33.5
4AV FA-4N	1/4	6.35	1/4	4.6	3/4	19.05	15.7	36.3
4AV FA-6N	1/4	6.35	3/8	4.6	7/8	22.22	15.7	39.6
4AV FA-8N	1/4	6.35	1/2	4.6	1-1/16	26.98	15.7	45.2
5AV FA-2N	5/16	7.93	1/8	6.4	9/16	14.28	16.5	34.3
5AV FA-4N	5/16	7.93	1/4	6.4	3/4	19.05	16.5	37.1
6AV FA-2N	3/8	9.52	1/8	7.0	9/16	14.28	17.3	35.3
6AV FA-4N	3/8	9.52	1/4	7.0	3/4	19.05	17.3	38.1
6AV FA-6N	3/8	9.52	3/8	7.0	7/8	22.22	17.3	41.1
6AV FA-8N	3/8	9.52	1/2	7.0	1-1/16	26.98	17.3	46.7
8AV FA-4N	1/2	12.70	1/4	10.0	3/4	19.05	22.9	43.4
8AV FA-6N	1/2	12.70	3/8	10.0	7/8	22.22	22.9	46.7
8AV FA-8N	1/2	12.70	1/2	10.0	1-1/16	26.98	24.4	52.3
10AV FA-6N	5/8	15.87	3/8	12.7	7/8	22.22	24.4	48.3
10AV FA-8N	5/8	15.87	1/2	12.7	1-1/16	26.98	24.4	53.8
10AV FA-1 2N	5/8	15.87	3/4	12.7	1-1/4	31.75	24.4	55.4
12AV FA-8N	3/4	19.05	1/2	15.0	1-1/16	26.98	24.4	53.8
12AV FA-1 2N	3/4	19.05	3/4	15.0	1-1/4	31.75	24.4	55.4
12AV FA-1 6N	3/4	19.05	1	15.0	1-5/8	41.27	24.4	62.5
14AV FA-1 2N	7/8	22.22	3/4	17.0	1-1/4	31.75	26.2	57.2
16AV FA-1 2N	1	25.40	3/4	20.0	1-1/4	31.75	30.7	61.7
16AV FA-1 6N	1	25.40	1	20.0	1-5/8	41.27	30.7	68.8

Metric Tube to Female ISO Tapered Thread

Part No.	Tube O.D. Tm m	P (NPT)	E Min	h	l	L
M3AV FA-2R	3	1/8	1.8	14.3	13.5	35.7
M6AV FA-2R	6	1/8	4.8	14.3	15.9	34.1
M6AV FA-4R	6	1/4	4.8	19.1	15.9	38.9
M8AV FA-4R	8	1/4	6.4	19.1	16.7	38.1
M10AV FA-4R	10	1/4	6.4	19.1	17.5	39.7
M10AV FA-6R	10	3/8	8.0	22.2	17.5	41.3
M10AV FA-8R	10	1/2	8.0	27.0	17.5	47.0
M12AV FA-4R	12	1/4	9.0	19.1	23.0	45.2
M12AV FA-6R	12	3/8	9.0	22.2	23.0	46.0
M12AV FA-8R	12	1/2	9.0	27.0	23.0	52.0
M18AV FA-1 2R	18	3/4	14.0	31.8	24.6	54.8



All dimensions are for reference only, and are subject to change without prior notice.
 Sizes and types other than those featured above are available on request.



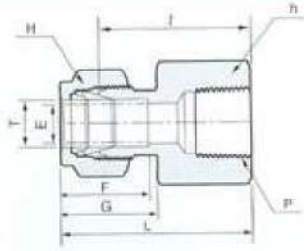
Female Connector AVFC

Fractional Tube to Male NPT Thread

Part No.	Tube O.D. T		p (NPT)	E Min	h		H		F	G	I	L
	in	mm			in	mm	in	mm				
2AVFC-2N	1/8	3.17	1/8	2.3	9/16	14.28	7/16	11.11	12.7	15.2	22.1	28.7
2AVFC-4N	1/8	3.17	1/4	2.3	3/4	19.05	7/16	11.11	12.7	15.2	26.9	33.5
3AVFC-2N	3/16	4.76	1/8	3.0	9/16	14.28	1/2	12.70	13.7	16.0	23.1	29.7
4AVFC-2N	1/4	6.35	1/8	4.8	9/16	14.28	9/16	14.28	15.2	17.8	23.8	31.2
4AVFC-4N	1/4	6.35	1/4	4.8	3/4	19.05	9/16	14.28	15.2	17.8	28.4	35.8
4AVFC-6N	1/4	6.35	3/8	4.8	7/8	22.22	9/16	14.28	15.2	17.8	30.2	37.6
4AVFC-8N	1/4	6.35	1/2	4.8	1-1/16	26.98	9/16	14.28	15.2	17.8	35.1	42.4
5AVFC-2N	5/16	7.93	1/8	6.4	9/16	14.28	5/8	15.87	16.3	18.5	24.6	32.0
5AVFC-4N	5/16	7.93	1/4	6.4	3/4	19.05	5/8	15.87	16.3	18.5	29.5	36.8
6AVFC-2N	3/8	9.52	1/8	7.0	5/8	15.87	11/16	17.46	16.8	19.3	25.4	32.8
6AVFC-4N	3/8	9.52	1/4	7.0	3/4	19.05	11/16	17.46	16.8	19.3	30.2	37.6
6AVFC-6N	3/8	9.52	3/8	7.0	7/8	22.22	11/16	17.46	16.8	19.3	31.8	39.1
6AVFC-8N	3/8	9.52	1/2	7.0	1-1/16	26.98	11/16	17.46	16.8	19.3	36.6	43.9
6AVFC-12N	3/8	9.52	3/4	7.0	1-5/16	33.33	11/16	17.46	16.8	19.3	40.4	47.8
8AVFC-4N	1/2	12.70	1/4	10.0	13/16	20.63	7/8	22.22	22.9	21.8	30.2	40.4
8AVFC-6N	1/2	12.70	3/8	10.0	7/8	22.22	7/8	22.22	22.9	21.8	31.8	41.9
8AVFC-8N	1/2	12.70	1/2	10.0	1-1/16	26.98	7/8	22.22	22.9	21.8	36.6	46.7
8AVFC-12N	1/2	12.70	3/4	10.0	1-5/16	33.33	7/8	22.22	22.9	21.8	38.1	48.3
10AVFC-6N	5/8	15.87	3/8	12.0	15/16	33.33	1	25.40	24.4	21.8	31.8	41.9
10AVFC-8N	5/8	15.87	1/2	12.0	1-1/16	26.98	1	25.40	24.4	21.8	36.6	46.7
12AVFC-8N	3/4	19.05	1/2	16.0	1-1/16	26.98	1-1/8	28.57	24.4	21.8	36.6	46.7
12AVFC-12N	3/4	19.05	3/4	16.0	1-5/16	33.33	1-1/8	28.57	24.4	21.8	38.1	48.3
14AVFC-12N	7/8	22.22	3/4	18.0	1-5/16	33.33	1-1/4	31.75	25.9	21.8	39.6	49.8
16AVFC-12N	1	25.40	3/4	22.0	1-3/8	34.92	1-1/2	38.10	31.2	26.4	41.1	53.3
16AVFC-16N	1	25.40	1	22.0	1-5/8	41.27	1-1/2	38.10	31.2	26.4	50.0	62.2



All dimensions are for reference only, and are subject to change without prior notice.
 Sizes and types other than those featured above are available on request.



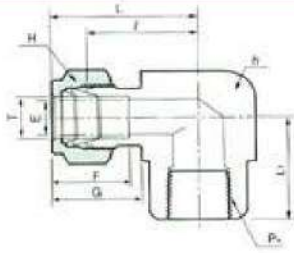
Female Connector AVFC

Metric Tube to Female ISO Tapered Thread

Part No.	Tube O.D. Tmm	P (NPT)	E Min	h	H	F	G	I	I ₁	L
M3AVFC-2R	3	1/8	2.3	14.3	11.1	12.9	15.3	22.1	9.9	28.7
M3AVFC-4R	3	1/4	2.3	19.1	11.1	12.9	15.3	26.9	15.0	33.5
M4AVFC-2R	4	1/8	2.3	14.3	12.7	13.7	16.1	23.1	9.9	29.7
M6AVFC-2R	6	1/8	4.8	14.3	14.3	15.3	17.7	23.9	9.9	31.3
M6AVFC-4R	6	1/4	4.8	19.1	14.3	15.3	17.7	28.4	15.0	35.8
M6AVFC-6R	6	3/8	4.8	22.2	14.3	15.3	17.7	29.5	15.0	36.9
M6AVFC-8R	6	1/2	4.8	27.0	14.3	15.3	17.7	35.1	19.8	42.5
M8AVFC-2R	8	1/8	6.4	14.3	15.9	16.2	18.6	24.6	9.9	32.1
M8AVFC-4R	8	1/4	6.4	19.1	15.9	16.2	18.6	29.5	15.0	37.0
M8AVFC-6R	8	3/8	6.4	22.2	15.9	16.2	18.6	30.2	15.0	37.0
M8AVFC-8R	8	1/2	6.4	27.0	15.9	16.2	18.6	35.8	19.8	43.3
M10AVFC-2R	10	1/8	8.0	17.5	19.1	17.2	19.5	25.4	9.9	33.0
M10AVFC-4R	10	1/4	8.0	19.1	19.1	17.2	19.5	30.2	15.0	37.8
M10AVFC-6R	10	3/8	8.0	22.2	19.1	17.2	19.5	31.0	15.0	38.6
M10AVFC-8R	10	1/2	8.0	27.0	19.1	17.2	19.5	36.6	19.8	44.2
M12AVFC-2R	12	1/8	8.3	22.2	22.2	22.8	22.0	28.4	9.9	38.5
M12AVFC-4R	12	1/4	10.0	22.2	22.2	22.8	22.0	30.2	15.0	40.3
M12AVFC-6R	12	3/8	10.0	22.2	22.2	22.8	22.0	31.0	15.0	41.1
M12AVFC-8R	12	1/2	10.0	27.0	22.2	22.8	22.0	36.6	19.8	46.7
M12AVFC-12R	12	3/4	10.0	31.8	22.2	22.8	22.0	38.9	20.6	49.0
M15AVFC-8R	15	1/2	12.0	27.0	25.4	24.4	22.0	36.6	19.8	46.7
M16AVFC-8R	16	1/2	12.0	27.0	25.4	24.4	22.0	36.8	19.8	46.9
M20AVFC-8R	20	1/2	16.0	30.2	31.8	26.0	22.0	37.8	19.8	47.9
M20AVFC-12R	20	3/4	16.0	31.8	31.8	26.0	22.0	39.6	20.6	49.7
M22AVFC-12R	22	3/4	18.0	31.8	31.8	26.0	22.0	39.6	20.6	49.7
M22AVFC-16R	22	1	18.0	39.7	31.8	26.0	22.0	47.8	25.4	57.9
M25AVFC-12R	25	3/4	22.0	36.5	38.1	31.3	26.5	41.1	20.6	53.4
M25AVFC-16R	25	1	22.0	39.7	38.1	31.3	26.5	50.0	25.4	62.3



All dimensions are for reference only, and are subject to change without prior notice.
 Sizes and types other than those featured above are available on request.



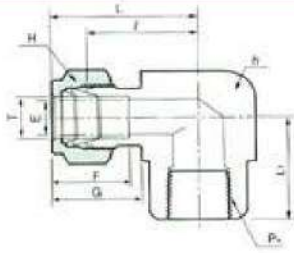
Female Elbow AVFE

Fractional Tube to Male NPT Thread

Part No.	Tube O.D. T		P (NPT)	E Min	h		H		F	G	I	L	L ₁
	in	mm			in	mm	in	mm					
2AVFE-2N	1/8	3.17	1/8	2.3	1/2	12.70	7/16	11.11	12.7	15.2	18.0	24.6	19.1
2AVFE-4N	1/8	3.17	1/4	2.3	11/16	17.46	7/16	11.11	12.7	15.2	20.8	27.4	22.4
3AVFE-2N	3/16	4.76	1/8	3.0	1/2	12.70	1/2	12.70	13.7	16.0	18.8	25.4	19.1
4AVFE-2N	1/4	6.35	1/8	4.8	1/2	12.70	9/16	14.28	15.2	17.8	19.6	26.9	19.1
4AVFE-4N	1/4	6.35	1/4	4.8	11/16	17.46	9/16	14.28	15.2	17.8	22.4	29.7	22.4
4AVFE-6N	1/4	6.35	3/8	4.8	13/16	20.63	9/16	14.28	15.2	17.8	24.4	31.8	22.4
4AVFE-8N	1/4	6.35	1/2	4.8	1	25.40	9/16	14.28	15.2	17.8	27.2	34.5	28.4
5AVFE-2N	5/16	7.93	1/8	6.4	9/16	14.28	5/8	15.87	16.3	18.5	21.3	28.7	19.1
5AVFE-4N	5/16	7.93	1/4	6.4	11/16	17.46	5/8	15.87	16.3	18.5	23.1	30.5	22.4
6AVFE-2N	3/8	9.52	1/8	7.0	5/8	15.87	11/16	17.46	16.8	19.3	23.1	30.5	19.1
6AVFE-4N	3/8	9.52	1/4	7.0	11/16	17.46	11/16	17.46	16.8	19.3	23.9	31.2	22.4
6AVFE-6N	3/8	9.52	3/8	7.0	13/16	20.63	11/16	17.46	16.8	19.3	25.9	33.3	22.4
6AVFE-8N	3/8	9.52	1/2	7.0	1	25.40	11/16	17.46	16.8	19.3	28.7	36.1	28.4
8AVFE-4N	1/2	12.70	1/4	10.0	13/16	20.63	7/8	22.22	22.9	21.8	25.9	36.1	22.4
8AVFE-6N	1/2	12.70	3/8	10.0	13/16	20.63	7/8	22.22	22.9	21.8	25.9	36.1	22.4
8AVFE-8N	1/2	12.70	1/2	10.0	1	25.40	7/8	22.22	22.9	21.8	28.7	38.9	28.4
10AVFE-6N	5/8	15.87	3/8	12.0	1	25.40	1	25.40	24.4	21.8	27.9	38.1	22.4
10AVFE-8N	5/8	15.87	1/2	12.0	1	25.40	1	25.40	24.4	21.8	29.7	39.9	28.4
12AVFE-8N	3/4	19.05	1/2	16.0	1-1/16	26.98	1-1/8	28.57	24.4	21.8	29.7	39.9	28.4
12AVFE-12N	3/4	19.05	3/4	16.0	1-1/4	31.75	1-1/8	28.57	24.4	21.8	34.5	44.7	31.8
14AVFE-12N	7/8	22.22	3/4	18.0	1-1/4	31.75	1-1/4	31.75	25.9	21.8	34.5	44.7	31.8
16AVFE-12N	1	25.40	3/4	22.0	1-3/8	34.92	1-1/2	38.10	31.2	26.4	36.8	49.0	31.8
16AVFE-16N	1	25.40	1	22.0	1-11/16	42.86	1-1/2	38.10	31.2	26.4	38.1	50.3	38.1



All dimensions are for reference only, and are subject to change without prior notice.
 Sizes and types other than those featured above are available on request.



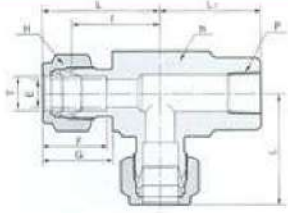
Female Elbow AVFE

Metric Tube to Male NPT Thread

Part No.	Tube O.D. Tmm	P (NPT)	E Min	h	H	F	G	I	L	L ₁
M3AVFE-2N	3	1/8	2.3	12.7	11.1	12.9	15.3	18.0	24.6	19.1
M3AVFE-4N	3	1/4	2.3	17.5	11.1	12.9	15.3	20.8	27.4	22.4
M4AVFE-2N	4	1/8	3.0	12.7	12.7	13.7	16.1	18.8	25.4	19.1
M6AVFE-2N	6	1/8	4.8	12.7	14.3	15.3	17.7	19.6	26.9	19.1
M6AVFE-4N	6	1/4	4.8	17.5	14.3	15.3	17.7	22.4	29.7	22.4
M6AVFE-6N	6	3/8	4.8	20.6	14.3	15.3	17.7	24.4	31.8	22.4
M6AVFE-8N	6	1/2	4.8	25.4	14.3	15.3	17.7	27.2	34.5	28.4
M8AVFE-2N	8	1/8	6.4	14.3	15.9	16.2	18.6	21.3	28.7	19.1
M8AVFE-4N	8	1/4	6.4	17.5	15.9	16.2	18.6	23.1	30.5	22.4
M12AVFE-4N	12	1/4	10.0	20.6	22.2	22.8	22.0	25.9	36.1	22.4
M12AVFE-6N	12	3/8	10.0	20.6	22.2	22.8	22.0	25.9	36.1	22.4
M12AVFE-8N	12	1/2	10.0	25.4	22.2	22.8	22.0	28.7	38.9	28.4
M15AVFE-6N	15	3/8	12.0	25.4	25.4	24.4	22.0	27.9	38.1	22.4
M15AVFE-8N	15	1/2	12.0	25.4	25.4	24.4	22.0	29.7	39.9	28.4
M18AVFE-8N	18	1/2	16.0	27.0	30.2	24.4	22.0	29.7	39.9	28.4
M18AVFE-1.2N	18	3/4	16.0	31.8	30.2	24.4	22.0	34.5	44.7	31.8
M22AVFE-1.2N	22	3/4	18.0	31.8	31.8	26.0	22.0	34.5	44.7	31.8
M25AVFE-1.2N	25	3/4	22.0	34.9	38.1	31.3	26.5	36.8	49.0	31.8
M25AVFE-1.6N	25	1	22.0	42.9	38.1	31.3	26.5	38.1	50.3	38.1



All dimensions are for reference only, and are subject to change without prior notice.
 Sizes and types other than those featured above are available on request.



Female Run Tee AVFRT

Fractional Tube to Male NPT Thread

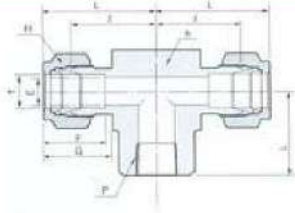
Part No.	Tube O.D. T		P (NPT)	E Min	h		H		F	G	I	L	L ₁
	in	mm			in	mm	in	mm					
2AVFRT-2N	1/8	3.17	1/8	2.3	1/2	12.70	7/16	11.11	12.7	15.2	18.0	24.6	19.1
4AVFRT-2N	1/4	6.35	1/8	4.8	1/2	12.70	9/16	14.28	15.2	17.8	19.6	26.9	19.1
4AVFRT-4N	1/4	6.35	1/4	4.8	11/16	17.46	9/16	14.28	15.2	17.8	22.9	29.7	22.4
6AVFRT-4N	3/8	9.52	1/4	7.0	11/16	17.46	11/16	17.46	16.8	19.3	23.9	31.2	22.4
8AVFRT-6N	1/2	12.70	3/8	10.0	13/16	20.63	7/8	22.22	22.9	21.8	25.9	36.1	22.4
8AVFRT-8N	1/2	12.70	1/2	10.0	1	25.40	7/8	22.22	22.9	21.8	29.7	39.9	28.4
12AVFRT-12N	3/4	19.05	3/4	16.0	1-1/4	31.75	1-1/8	28.57	24.4	21.8	34.5	44.7	31.8

Metric Tube to Male NPT Thread

Part No.	Tube O.D. Tmm	P (NPT)	E Min	h	H	F	G	I	L	L ₁
M3AVFRT-2N	3	1/8	2.3	12.7	11.1	12.9	15.3	18.0	24.4	19.1
M6AVFRT-2N	6	1/8	4.8	12.7	14.3	15.3	17.7	19.6	26.9	19.1
M6AVFRT-4N	6	1/4	4.8	17.5	14.3	15.3	17.7	22.4	29.7	22.4
M12AVFRT-4N	12	1/4	10.0	20.6	22.2	22.8	22.0	25.9	36.1	22.4
M12AVFRT-6N	12	3/8	10.0	20.6	22.2	22.8	22.0	25.9	36.1	22.4
M12AVFRT-8N	12	1/2	10.0	25.4	22.2	22.8	22.0	28.7	38.9	28.4
M15AVFRT-8N	15	1/2	12.0	25.4	25.4	24.4	22.0	28.7	38.9	28.4
M18AVFRT-12N	18	3/4	16.0	31.8	30.2	24.4	22.0	34.5	44.7	31.8
M25AVFRT-12N	25	3/4	22.0	34.9	38.1	31.3	26.5	36.8	49.0	31.8
M25AVFRT-16N	25	1	22.0	42.9	38.1	31.3	26.5	38.1	50.3	38.1



All dimensions are for reference only, and are subject to change without prior notice.
 Sizes and types other than those featured above are available on request.



Female Branch Tee

AVFBT

Fractional Tube to Male NPT Thread

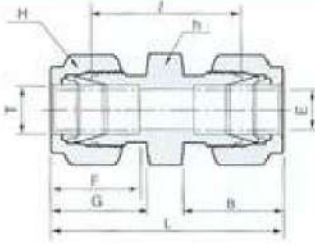
Part No.	Tube O.D. T		P (NPT)	E Min	h		H		F	G	I	L	L ₁
	in	mm			in	mm	in	mm					
2AVFBT-2N	1/8	3.17	1/8	2.3	1/2	12.70	7/16	11.11	12.7	15.2	18.0	24.4	19.1
4AVFBT-2N	1/4	6.35	1/8	4.8	1/2	12.70	9/16	14.28	15.2	17.8	19.6	26.9	19.1
4AVFBT-4N	1/4	6.35	1/4	4.8	11/16	17.46	9/16	14.28	15.2	17.8	22.4	29.7	22.4
6AVFBT-4N	3/8	9.52	1/4	7.0	11/16	17.46	11/16	17.46	16.8	19.3	23.9	31.2	22.4
8AVFBT-4N	1/2	12.70	1/4	10.0	13/16	20.63	7/8	22.22	22.9	21.8	25.9	36.1	22.4
8AVFBT-6N	1/2	12.70	3/8	10.0	13/16	20.63	7/8	22.22	22.9	21.8	25.9	36.1	22.4
8AVFBT-8N	1/2	12.70	1/2	10.0	1	25.40	7/8	22.22	22.9	21.8	28.7	38.9	28.4
10AVFBT-8N	5/8	15.87	1/2	12.0	1	25.40	1	25.40	24.4	21.8	28.7	38.9	28.4
12AVFBT-12N	3/4	19.05	3/4	16.0	1-1/4	31.75	1-1/8	28.57	24.4	21.8	34.5	44.7	31.8
16AVFBT-12N	1	25.40	3/4	22.0	1-3/8	34.92	1-1/2	38.10	31.2	26.4	36.8	49.0	31.8
16AVFBT-16N	1	25.40	1	22.0	1-11/16	42.86	1-1/2	38.10	31.2	26.4	38.1	50.3	38.1

Metric Tube to Male NPT Thread

Part No.	Tube O.D. Tmm	P (NPT)	E Min	h	H	F	G	I	L	L ₁
M3AVFBT-2N	3	1/8	2.3	12.7	11.1	12.9	15.3	18.0	24.4	19.1
M6AVFBT-2N	6	1/8	4.8	12.7	14.3	15.3	17.7	19.6	26.9	19.1
M6AVFBT-4N	6	1/4	4.8	17.5	14.3	15.3	17.7	22.4	29.7	22.4
M12AVFBT-4N	12	1/4	10.0	20.6	22.2	22.8	22.0	25.9	36.1	22.4
M12AVFBT-6N	12	3/8	10.0	20.6	22.2	22.8	22.0	25.9	36.1	22.4
M12AVFBT-8N	12	1/2	10.0	25.4	22.2	22.8	22.0	28.7	38.9	28.4
M15AVFBT-8N	15	1/2	12.0	25.4	25.4	24.4	22.0	28.7	38.9	28.4
M18AVFBT-12N	18	3/4	16.0	31.8	30.2	24.4	22.0	34.5	44.7	31.8
M25AVFBT-12N	25	3/4	22.0	34.9	38.1	31.3	26.5	36.8	49.0	31.8
M25AVFBT-16N	25	1	22.0	42.9	38.1	31.3	26.5	38.1	50.3	38.1



All dimensions are for reference only, and are subject to change without prior notice.
 Sizes and types other than those featured above are available on request.



Union
AVU

Fractional Tubes

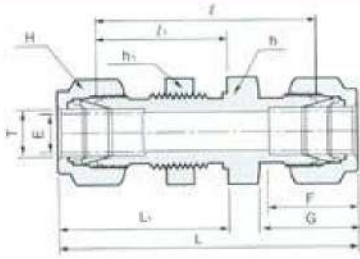
Part No.	Tube O.D. T		E Min	h		H		F	G	I	L
	in	mm		in	mm	in	mm				
2 AV U	1/8	3.17	2.3	7/16	11.11	7/16	11.11	12.7	15.2	22.4	35.6
3 AV U	3/16	4.76	3.0	7/16	11.11	1/2	12.70	13.7	16.0	24.1	37.3
4 AV U	1/4	6.35	4.8	1/2	12.70	9/16	14.28	15.2	17.8	26.2	40.9
5 AV U	5/16	7.93	6.4	9/16	14.28	5/8	15.87	16.3	18.5	28.2	42.9
6 AV U	3/8	9.52	7.0	5/8	15.87	11/16	17.46	16.8	19.3	30.2	45.0
8 AV U	1/2	12.70	10.0	13/16	20.63	7/8	22.22	22.9	21.8	31.0	51.3
10 AV U	5/8	15.87	12.0	15/16	23.81	1	25.40	24.4	21.8	31.8	52.1
12 AV U	3/4	19.05	16.0	1-1/16	26.98	1-1/8	28.57	24.4	21.8	33.3	53.6
14 AV U	7/8	22.22	18.0	1-3/16	30.16	1-1/4	31.75	25.9	21.8	35.1	55.4
16 AV U	1	25.40	22.0	1-3/8	34.92	1-1/2	38.10	31.2	26.4	40.4	64.8

Metric Tubes

Part No.	Tube O.D. T mm	E Min	h	H	F	G	I	L
M3AVU	3	2.3	11.1	11.1	12.9	15.3	22.1	31.3
M4AVU	4	2.3	11.1	12.7	13.7	16.1	24.1	37.3
M6AVU	6	4.8	12.7	14.3	15.3	17.7	26.2	41.0
M8AVU	8	6.4	14.3	15.9	16.2	18.6	28.2	43.2
M10AVU	10	8.0	17.5	19.1	15.3	19.5	31.0	46.2
M12AVU	12	10.0	20.6	22.2	22.8	22.0	31.0	51.2
M15AVU	15	12.0	23.8	25.4	24.4	22.0	31.8	52.0
M16AVU	16	12.0	23.8	25.4	24.4	22.0	31.8	52.0
M18AVU	18	15.0	27.0	30.2	24.4	22.0	33.3	53.5
M20AVU	20	16.0	30.2	31.8	26.0	22.0	34.8	55.0
M22AVU	22	18.0	30.2	31.8	26.0	22.0	34.8	55.0
M25AVU	25	22.0	34.9	38.1	31.3	26.5	40.4	65.0



All dimensions are for reference only, and are subject to change without prior notice.
Sizes and types other than those featured above are available on request.



Bulkhead Union AVBU

Fractional Tubes

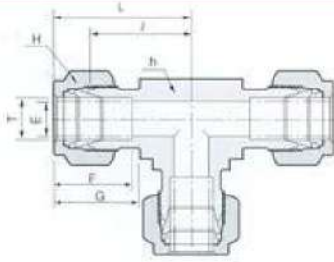
Part No.	Tube O.D.		E Min	h		H		F	G	I	I ₁	L	L ₁	Panel Hole Drill Size	Max Panel Thickness
	in	mm		in	mm	in	mm								
2AVBU	1/8	3.17	2.3	1/2	12.70	7/16	11.11	12.7	15.2	38.1	24.6	51.3	31.2	8.3	12.7
3AVBU	3/16	4.76	3.0	9/16	14.28	1/2	12.70	13.7	16.0	40.4	25.4	53.6	32.0	9.9	12.7
4AVBU	1/4	6.35	4.8	5/8	15.87	9/16	14.28	15.2	17.8	42.9	26.2	57.7	33.5	11.5	10.2
5AVBU	5/16	7.93	6.4	11/16	17.46	5/8	15.87	16.3	18.5	46.0	28.4	60.7	35.8	13.1	11.2
6AVBU	3/8	9.52	7.0	3/4	19.05	11/16	17.46	16.8	19.3	47.5	29.5	62.2	36.8	14.7	11.2
8AVBU	1/2	12.70	10.0	15/16	23.81	7/8	22.22	22.9	21.8	50.8	31.8	71.1	41.9	19.4	12.7
10AVBU	5/8	15.87	12.0	1-1/16	26.81	1	25.40	24.4	21.8	52.3	32.5	72.6	42.7	22.6	12.7
12AVBU	3/4	19.05	16.0	1-3/16	30.16	1-1/8	28.57	24.4	21.8	58.7	37.3	79.0	47.5	25.8	16.8
14AVBU	7/8	22.22	18.0	1-3/8	34.92	1-1/4	31.75	25.9	21.8	64.3	42.9	84.6	53.1	29.0	19.1
16AVBU	1	25.40	22.0	1-5/8	41.27	1-1/2	38.10	31.2	26.4	71.4	45.2	95.8	57.4	33.7	19.1

Metric Tubes

Part No.	Tube O.D. Tmm	E Min	h	h ₁	H	A	B	I	I ₁	L	L ₁	Panel Hole Drill Size	Max Panel Thickness
M3AVBU	3	2.3	12.7	12.7	12.7	12.9	15.3	38.1	24.6	51.3	31.2	8.3	12.7
M4AVBU	4	2.3	14.3	14.3	12.7	13.7	16.1	40.4	25.4	53.6	32.0	9.9	12.7
M6AVBU	6	4.8	15.9	15.9	14.3	15.3	17.7	42.9	26.2	57.7	33.6	11.5	10.2
M8AVBU	8	6.4	17.5	17.5	15.9	16.2	18.6	46.0	28.6	61.0	36.1	13.1	11.2
M10AVBU	10	8.0	22.2	22.0	19.1	17.2	19.5	48.5	29.4	63.7	37.0	16.2	11.2
M12AVBU	12	10.0	23.8	23.8	22.2	22.8	22.0	50.8	31.8	71.0	41.9	19.5	12.7
M15AVBU	15	12.0	27.0	27.0	25.4	24.4	22.0	52.3	32.5	72.5	42.6	22.8	12.7
M16AVBU	16	12.0	27.0	27.0	25.4	24.4	22.0	52.3	32.5	72.5	42.6	22.8	12.7
M18AVBU	18	15.0	30.2	30.2	30.2	24.4	22.0	58.7	37.3	78.9	47.4	26.0	16.8



All dimensions are for reference only, and are subject to change without prior notice.
 Sizes and types other than those featured above are available on request.



Union Tee
AVUT

Fractional Tubes

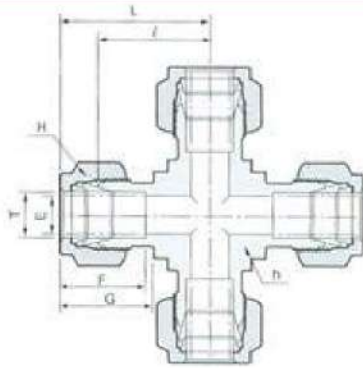
Part No.	Tube O.D. T		E Min	h		H		F	G	I	L
	in	mm		in	mm	in	mm				
2AVUT	1/8	3.17	2.3	7/16	11.11	7/16	11.11	12.7	15.2	15.7	22.4
3AVUT	3/16	4.76	3.0	7/16	11.11	1/2	12.70	13.7	16.0	17.8	24.4
4AVUT	1/4	6.35	4.8	1/2	12.70	9/16	14.28	15.2	17.8	19.6	26.9
5AVUT	5/16	7.93	6.4	9/16	14.28	5/8	15.87	16.3	18.5	21.3	28.7
6AVUT	3/8	9.52	7.0	5/8	15.87	11/16	17.46	16.8	19.3	23.1	30.5
8AVUT	1/2	12.70	10.0	13/16	20.63	7/8	22.22	22.9	21.8	25.9	36.1
10AVUT	5/8	15.87	12.0	1	25.40	1	25.40	24.4	21.8	28.7	38.9
12AVUT	3/4	19.05	16.0	1-1/16	26.98	1-1/8	28.57	24.4	21.8	29.7	39.9
14AVUT	7/8	22.22	18.0	1-1/4	31.75	1-1/4	31.75	25.9	21.8	34.5	44.7
16AVUT	1	25.40	22.0	1-3/8	34.92	1-1/2	38.10	31.2	26.4	36.8	49.0

Metric Tubes

Part No.	Tube O.D. Tmm	E Min	h	H	F	G	I	L
M3AVUT	3	2.3	11.1	11.1	12.9	15.3	17.0	23.6
M4AVUT	4	2.3	11.1	12.7	13.7	16.1	18.8	25.4
M6AVUT	6	4.8	12.7	14.3	15.3	17.7	19.6	27.0
M8AVUT	8	6.4	14.3	15.9	16.2	18.6	21.3	28.8
M10AVUT	10	8.0	17.5	19.1	17.2	19.5	23.9	31.5
M12AVUT	12	10.0	20.6	22.2	22.8	22.0	25.9	36.0
M15AVUT	15	12.0	25.4	25.4	24.4	22.0	28.7	38.8
M16AVUT	16	12.0	25.4	25.4	24.4	22.0	28.7	38.8
M18AVUT	18	15.0	27.0	30.2	24.4	22.0	29.7	39.8
M20AVUT	20	16.0	31.8	31.8	26.0	22.0	32.5	42.6
M22AVUT	22	18.0	31.8	31.8	26.0	22.0	32.5	42.6
M25AVUT	25	22.0	34.9	38.1	31.3	26.5	36.8	49.1



All dimensions are for reference only, and are subject to change without prior notice.
Sizes and types other than those featured above are available on request.



Union Cross
AVUC

Fractional Tubes

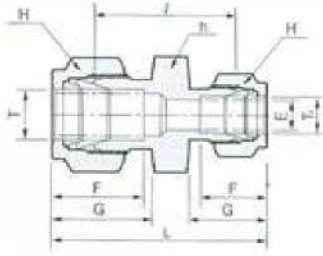
Part No.	Tube O.D. T		E Min	h		H		F	G	I	L
	in	mm		in	mm	in	mm				
2AVUC	1/8	3.17	2.3	7/16	11.11	7/16	11.11	12.7	15.2	15.7	22.4
3AVUC	3/16	4.76	3.0	7/16	11.11	1/2	12.70	13.7	16.0	17.8	24.4
4AVUC	1/4	6.35	4.8	1/2	12.70	9/16	14.28	15.2	17.8	19.6	26.9
5AVUC	5/16	7.93	6.4	9/16	14.28	5/8	15.87	16.3	18.5	21.3	28.7
6AVUC	3/8	9.52	7.0	5/8	15.87	11/16	17.46	16.8	19.3	23.1	30.5
8AVUC	1/2	12.70	10.0	13/16	20.63	7/8	22.22	22.9	21.8	25.9	36.1
10AVUC	5/8	15.87	12.0	1	25.40	1	25.40	24.4	21.8	28.7	38.9
12AVUC	3/4	19.05	16.0	1-1/16	26.98	1-1/8	28.57	24.4	21.8	29.7	39.9
14AVUC	7/8	22.22	18.0	1-1/4	31.75	1-1/4	31.75	25.9	21.8	34.5	44.7
16AVUC	1	25.40	22.0	1-3/8	34.92	1-1/2	38.10	31.2	26.4	36.8	49.0

Metric Tubes

Part No.	Tube O.D. Tmm	E Min	h	H	F	G	I	L
M3AVUC	3	2.3	11.1	11.1	12.9	15.3	17.0	23.6
M4AVUC	4	2.3	11.1	12.7	13.7	16.1	18.8	25.4
M6AVUC	6	4.8	12.7	14.3	15.3	17.7	19.6	27.0
M8AVUC	8	6.4	14.3	15.9	16.2	18.6	21.3	28.8
M10AVUC	10	8.0	17.5	19.1	17.2	19.5	23.9	31.5
M12AVUC	12	10.0	20.6	22.2	22.8	22.0	25.9	36.0



All dimensions are for reference only, and are subject to change without prior notice.
Sizes and types other than those featured above are available on request.



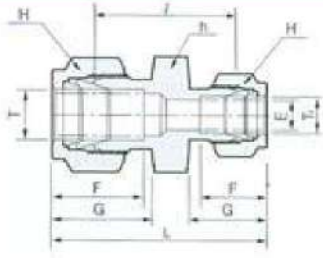
Reducing Union AVRU

Fractional Tube to Fractional Tube

Part No.	Tube O.D.				E Min	h		H		H1		F	F1	G	G1	L	L1
	T		T1			in	mm	in	mm	in	mm						
	in	mm	in	mm													
3AVRU-2	3/16	4.76	1/8	3.17	2.3	7/16	11.11	1/2	12.70	7/16	11.11	13.7	12.7	16.0	15.2	23.4	36.6
4AVRU-2	1/4	6.35	1/8	3.17	2.3	1/2	12.70	9/16	14.28	7/16	11.11	15.2	12.7	17.8	15.2	24.6	38.6
4AVRU-3	1/4	6.35	3/16	4.76	3.0	1/2	12.70	9/16	14.28	1/2	12.70	15.2	13.7	17.8	16.0	25.4	39.4
5AVRU-2	5/16	7.93	1/8	3.17	2.3	9/16	14.28	5/8	15.87	7/16	11.11	16.3	12.7	18.5	15.2	25.9	39.9
5AVRU-4	5/16	7.93	1/4	6.35	4.8	9/16	14.28	5/8	15.87	9/16	14.28	16.3	15.2	18.5	17.8	27.4	42.2
6AVRU-2	3/8	9.52	1/8	3.17	2.3	5/8	15.87	11/16	17.46	7/16	11.11	16.8	12.7	19.3	15.2	26.9	40.9
6AVRU-4	3/8	9.52	1/4	6.35	4.8	5/8	15.87	11/16	17.46	9/16	14.28	16.8	15.2	19.3	17.8	28.4	43.2
6AVRU-5	3/8	9.52	5/16	7.93	6.4	5/8	15.87	11/16	17.46	5/8	15.87	16.8	16.3	19.3	18.5	29.5	44.2
8AVRU-2	1/2	12.70	1/8	3.17	2.3	13/16	20.63	7/8	22.22	7/16	11.11	22.9	12.7	21.8	15.2	28.4	45.2
8AVRU-4	1/2	12.70	1/4	6.35	4.8	13/16	20.63	7/8	22.22	9/16	14.28	22.9	15.2	21.8	17.8	29.5	47.0
8AVRU-6	1/2	12.70	3/8	9.52	7.0	13/16	20.63	7/8	22.22	11/16	17.46	22.9	16.8	17.8	19.3	31.0	48.5
10AVRU-6	5/8	15.87	3/8	9.52	7.0	15/16	23.81	1	25.40	11/16	17.46	24.4	16.8	21.8	19.3	31.8	49.3
10AVRU-8	5/8	15.87	1/2	12.70	10.0	15/16	23.81	1	25.40	7/8	22.22	24.4	22.9	21.8	21.8	31.8	52.1
12AVRU-4	3/4	19.05	1/4	6.35	4.8	1-1/16	26.98	1-1/8	28.57	9/16	14.28	24.4	15.2	21.8	17.8	31.8	49.3
12AVRU-6	3/4	19.05	3/8	9.52	7.0	1-1/16	26.98	1-1/8	28.57	11/16	17.46	24.4	16.8	21.8	19.3	33.3	50.8
12AVRU-8	3/4	19.05	1/2	12.70	10.0	1-1/16	26.98	1-1/8	28.57	7/8	22.22	24.4	22.9	21.8	21.8	33.3	53.6
12AVRU-10	3/4	19.05	5/8	15.87	12.0	1-1/16	26.98	1-1/8	28.57	1	25.40	24.4	24.4	21.8	21.8	33.3	53.6
16AVRU-8	1	25.40	1/2	12.70	10.0	1-3/8	34.92	1-1/2	38.10	7/8	22.22	31.2	22.9	26.4	21.8	40.9	63.2
16AVRU-12	1	25.40	3/4	19.05	16.0	1-3/8	34.92	1-1/2	38.10	1-1/8	28.57	31.2	24.4	26.4	21.8	40.9	62.7



All dimensions are for reference only, and are subject to change without prior notice.
 Sizes and types other than those featured above are available on request.



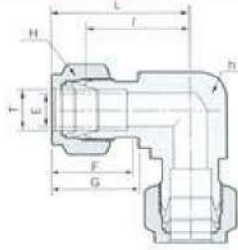
Reducing Union AVRU

Part No.	Tube O.D.		E min	Width across flat			F	F ₁	G	G ₁	I	L
	T (mm)	T ₁ (mm)		h	H	H ₁						
M6AVRU-M3	6	3	2.3	12.7	14.3	11.1	15.3	12.9	17.7	15.3	24.6	38.6
M6AVRU-M3	6	4	2.3	12.7	14.3	12.7	15.3	13.7	17.7	16.1	25.4	39.4
M8AVRU-M6	8	6	4.8	14.3	15.9	14.3	16.2	15.3	18.6	17.7	27.4	42.3
M10AVRU-M6	10	6	4.8	17.5	19.1	14.3	17.2	15.3	19.5	17.7	29.5	44.5
M10AVRU-M8	10	8	6.4	17.5	22.2	15.9	17.2	16.2	19.5	18.6	30.0	45.1
M12AVRU-M6	12	6	4.8	20.6	22.2	14.3	22.8	15.3	22.0	17.7	29.5	47.0
M12AVRU-M8	12	8	6.4	20.6	22.2	15.9	22.8	16.2	22.0	18.6	30.2	47.8
M12AVRU-M10	12	10	8.0	20.6	22.2	19.1	22.8	17.2	22.0	19.5	31.0	48.7
M16AVRU-M12	16	12	10.0	23.8	25.4	22.2	24.4	22.8	22.0	22.0	31.8	52.0
M25AVRU-M18	25	18	15.0	34.9	38.1	30.2	31.3	24.4	26.5	22.0	38.6	61.0
M25AVRU-M20	25	20	16.0	34.9	38.1	31.8	31.3	26.0	26.5	22.0	39.9	62.3

Part No.	Tube O.D.			E Min	Width across flat			F	F ₁	G	G ₁	I	L
	D (mm)	D1			h	H	H ₁						
		in	mm										
M3AVRU-2	3	1/8	3.17	2.3	11.1	11.1	11.1	12.9	12.8	15.3	15.2	22.1	35.2
M4AVRU-2	4	1/8	3.17	2.3	11.1	12.7	11.1	13.7	12.8	16.1	15.2	23.4	36.5
M4AVRU-4	4	1/4	6.35	2.3	14.3	12.7	14.3	13.7	15.3	16.1	17.7	25.4	39.4
M6AVRU-2	6	1/8	3.17	2.3	12.7	14.3	11.1	15.3	12.8	17.7	15.2	24.6	38.5
M6AVRU-4	6	1/4	6.35	4.8	12.7	14.3	14.3	15.3	15.8	17.7	17.7	26.2	41.0
M6AVRU-5	6	5/16	7.93	4.8	14.3	14.3	15.9	15.3	16.2	17.7	18.6	27.4	42.3
M8AVRU-4	8	1/4	6.35	4.8	14.3	15.9	14.3	16.2	15.3	18.6	17.7	27.4	42.3
M10AVRU-2	10	1/8	3.17	2.3	17.5	19.1	11.1	17.2	16.2	19.5	15.2	27.7	41.8
M10AVRU-4	10	1/4	6.35	4.8	17.5	19.1	14.3	17.2	15.3	19.5	17.7	29.5	44.5
M10AVRU-5	10	5/16	7.93	6.4	17.5	19.1	15.9	17.2	12.8	19.5	18.6	30.0	45.1
M10AVRU-6	10	3/8	9.52	7.0	17.5	19.1	17.5	17.2	15.3	19.5	19.2	31.0	45.9
M12AVRU-5	12	5/16	7.93	6.4	20.6	22.2	15.9	22.8	16.2	22.0	18.6	30.2	47.8
M12AVRU-6	12	3/8	9.52	7.0	20.6	22.2	17.5	22.8	16.9	22.0	19.2	31.0	48.4
M12AVRU-8	12	1/2	12.70	10.0	20.6	22.2	22.2	22.8	22.8	22.0	22.0	31.0	51.2
M15AVRU-8	15	1/2	12.70	10.0	23.8	25.4	22.2	24.4	22.8	22.0	22.0	31.8	52.0
M16AVRU-10	16	5/8	15.87	12.0	23.8	25.4	25.4	24.4	24.4	22.0	22.0	31.8	52.0
M18AVRU-12	18	3/4	19.05	15.0	27.0	30.2	28.6	24.4	24.4	22.0	22.0	33.3	53.5



All dimensions are for reference only, and are subject to change without prior notice.
 Sizes and types other than those featured above are available on request.



Union Elbow AVEU

Fractional Tube to Fractional AVLOK port

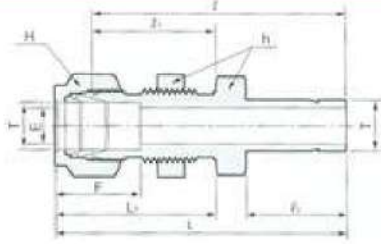
Part No.	Tube O.D. T		E Min	h		H		F	G	I	L
	in	mm		in	mm	in	mm				
2AVEU	1/8	3.17	2.3	7/16	11.11	7/16	11.11	12.7	15.2	15.7	22.4
3AVEU	3/16	4.76	3.0	7/16	11.11	1/2	12.70	13.7	16.0	17.8	24.4
4AVEU	1/4	6.35	4.8	1/2	12.70	9/16	14.28	15.2	17.8	19.6	26.9
5AVEU	5/16	7.93	6.4	9/16	14.28	5/8	15.87	16.3	18.5	21.3	28.7
6AVEU	3/8	9.52	7.0	5/8	15.87	11/16	17.46	16.8	19.3	23.1	30.5
8AVEU	1/2	12.70	10.0	13/16	20.63	7/8	22.22	22.9	21.8	25.9	36.1
10AVEU	5/8	15.87	12.0	1	25.40	1	25.40	24.4	21.8	28.7	38.9
12AVEU	3/4	19.05	16.0	1-1/16	26.98	1-1/8	28.57	24.4	21.8	29.7	39.9
14AVEU	7/8	22.22	18.0	1-1/4	31.75	1-1/4	31.75	25.9	21.8	34.5	44.7
16AVEU	1	25.40	22.0	1-3/8	34.92	1-1/2	38.10	31.2	26.4	36.8	49.0

Metric Tube to Metric AVLOK port

Part No.	Tube O.D. Tmm	E Min	h	H	F	G	I	L
M3AVEU	3	2.3	11.1	11.1	12.9	15.3	17.0	23.6
M4AVEU	4	2.3	11.1	12.7	13.7	16.1	18.8	25.4
M6AVEU	6	4.8	12.7	14.3	15.3	17.7	19.6	27.0
M8AVEU	8	6.4	14.3	15.9	16.2	18.6	21.3	28.8
M10AVEU	10	8.0	17.5	19.1	17.2	19.5	23.9	31.5
M12AVEU	12	10.0	20.6	22.2	22.8	22.0	25.9	36.0
M15AVEU	15	12.0	25.4	25.4	24.4	22.0	28.7	38.8
M16AVEU	16	12.0	25.4	25.4	24.4	22.0	28.7	38.8
M18AVEU	18	15.0	27.0	30.2	24.4	22.0	29.7	39.8
M20AVEU	20	16.0	31.8	31.8	26.0	22.0	32.5	42.6
M22AVEU	22	18.0	31.8	31.8	26.0	22.0	32.5	42.6
M25AVEU	25	22.0	34.9	38.1	31.3	26.5	36.8	49.1



All dimensions are for reference only, and are subject to change without prior notice.
 Sizes and types other than those featured above are available on request.



Bulk Head Reducer AVBR

Fractional Tube to Fractional AVLOK port

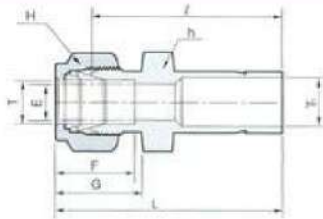
Part No.	Tube O.D.		E Min	h		H		F	G	I	I ₁	L	L ₁	Panel Hole Drill Size	Max Panel Thickness
	in	mm		in	mm	in	mm								
2AVBR	1/8	3.17	2.0	1/2	12.70	7/16	11.11	12.7	42.9	24.6	13.5	49.5	31.2	8.3	12.7
4AVBR	1/4	6.35	4.8	5/8	15.87	9/16	14.28	15.2	48.5	26.2	15.7	55.9	33.5	11.5	10.2
6AVBR	3/8	9.52	7.0	3/4	19.05	11/16	17.46	16.8	53.8	29.5	17.5	61.2	36.8	14.7	11.2
8AVBR	1/2	12.70	10.0	15/16	23.81	7/8	22.22	22.9	62.7	31.8	23.1	72.9	41.9	19.4	12.7

Metric Tube to Metric AVLOK port

Part No.	Tube O.D. T(mm)	E Min	h	H	A	B	I	I ₁	L	L ₁	Panel Hole Drill Size	Max Panel Thickness
M6AVBR	6	4.8	15.9	14.3	15.3	48.5	26.2	15.9	55.9	33.6	11.5	10.2
M8AVBR	8	6.4	17.5	15.9	16.2	53.1	28.6	16.7	59.1	36.1	13.1	11.2
M12AVBR	12	10.0	23.8	22.2	22.8	62.7	31.8	23.0	72.9	41.9	19.4	12.7



All dimensions are for reference only, and are subject to change without prior notice.
 Sizes and types other than those featured above are available on request.



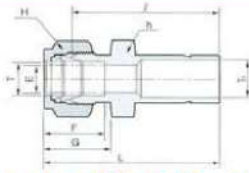
Reducer AVR

Fractional Tube to Fractional AVLOK port

Part No.	Tube O.D.				E Min	h		H		F	G	I	L
	in	mm	in	mm		in	mm	in	mm				
2AVR-2	1/8	3.17	1/8	3.17	2.0	7/16	11.11	7/16	11.11	12.7	15.2	26.9	33.5
2AVR-3	1/8	3.17	3/16	4.76	2.3	7/16	11.11	7/16	11.11	12.7	15.2	27.7	34.3
2AVR-4	1/8	3.17	1/4	6.35	2.3	7/16	11.11	7/16	11.11	12.7	15.2	29.5	36.1
2AVR-6	1/8	3.17	3/8	9.52	2.3	7/16	11.11	7/16	11.11	12.7	15.2	31.0	37.6
2AVR-8	1/8	3.17	1/2	12.70	2.3	9/16	14.28	7/16	11.11	12.7	15.2	37.6	44.2
3AVR-2	3/16	4.76	1/8	3.17	2.0	7/16	11.11	7/16	12.70	13.7	16.0	28.2	34.8
3AVR-4	3/16	4.76	1/4	6.35	3.0	7/16	11.11	7/16	12.70	13.7	16.0	30.5	37.8
4AVR-2	1/4	6.35	1/8	3.17	2.0	1/2	12.70	9/16	14.28	15.2	17.8	29.5	36.8
4AVR-3	1/4	6.35	3/16	4.76	3.0	1/2	12.70	9/16	14.28	15.2	17.8	30.2	37.6
4AVR-4	1/4	6.35	1/4	6.35	4.8	1/2	12.70	9/16	14.28	15.2	17.8	31.8	39.1
4AVR-5	1/4	6.35	5/16	7.93	4.8	1/2	12.70	9/16	14.28	15.2	17.8	32.5	39.9
4AVR-6	1/4	6.35	3/8	9.52	4.8	1/2	12.70	9/16	14.28	15.2	17.8	33.3	40.6
4AVR-8	1/4	6.35	1/2	12.70	4.8	9/16	14.28	9/16	14.28	15.2	17.8	38.9	46.2
4AVR-10	1/4	6.35	5/8	15.87	4.8	11/16	17.46	9/16	14.28	15.2	17.8	40.6	48.0
4AVR-12	1/4	6.35	3/4	19.05	4.8	13/16	20.63	9/16	14.28	15.2	17.8	40.4	47.8
5AVR-6	5/16	7.93	3/8	9.52	6.4	9/16	14.28	5/8	15.87	16.3	18.5	34.5	41.9
5AVR-8	5/16	7.93	1/2	12.70	6.4	9/16	14.28	5/8	15.87	16.3	18.5	40.1	47.5
6AVR-4	3/8	9.52	1/4	6.35	4.8	5/8	15.87	11/16	17.46	16.8	19.3	34.0	41.4
6AVR-6	3/8	9.52	3/8	9.52	7.0	5/8	15.87	11/16	17.46	16.8	19.3	35.8	43.2
6AVR-8	3/8	9.52	1/2	12.70	7.0	5/8	15.87	11/16	17.46	16.8	19.3	41.1	48.5
6AVR-10	3/8	9.52	5/8	15.87	7.0	11/16	17.46	11/16	17.46	16.8	19.3	42.9	50.3
6AVR-12	3/8	9.52	3/4	19.05	7.0	13/16	20.63	11/16	17.46	16.8	19.3	42.9	50.3
8AVR-4	1/2	12.70	1/4	6.35	4.8	13/16	20.63	7/8	22.22	22.9	21.8	34.8	45.0
8AVR-6	1/2	12.70	3/8	9.52	7.0	13/16	20.63	7/8	22.22	22.9	21.8	36.6	46.7
8AVR-8	1/2	12.70	1/2	12.70	10.0	13/16	20.63	7/8	22.22	22.9	21.8	42.2	52.3
8AVR-10	1/2	12.70	5/8	15.87	10.0	13/16	20.63	7/8	22.22	22.9	21.8	43.7	53.8
8AVR-12	1/2	12.70	3/4	19.05	10.0	13/16	20.63	7/8	22.22	22.9	21.8	43.7	53.8
8AVR-16	1/2	12.70	1	25.40	10.0	1-1/16	26.98	7/8	22.22	22.9	21.8	50.0	60.2
10AVR-12	5/8	15.87	3/4	19.05	12.0	15/16	23.81	1	25.40	24.4	21.8	44.5	54.6
10AVR-14	5/8	15.87	7/8	22.22	12.0	15/16	23.81	1	25.40	24.4	21.8	46.0	56.1
10AVR-16	5/8	15.87	1	25.40	12.0	1-1/16	23.81	1	25.40	24.4	21.8	50.8	61.0
12AVR-8	3/4	19.05	1/2	12.70	10.0	1-1/16	26.98	1-1/8	28.57	24.4	21.8	44.5	54.6
12AVR-16	3/4	19.05	1	25.40	16.0	1-1/16	26.98	1-1/8	28.57	24.4	21.8	52.3	62.5



All dimensions are for reference only, and are subject to change without prior notice.
 Sizes and types other than those featured above are available on request.



Reducer AVR

Metric Tube to Metric AVLOK port

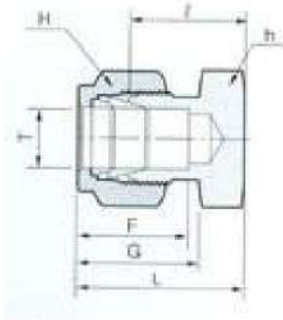
Part No.	Tube O.D.		E Min	h	H	F	G	I	L
	T (mm)	T1 (mm)							
M3AVR-M4	3	4	2.3	11.1	11.1	12.9	15.3	28.4	35.0
M3AVR-M6	3	6	2.3	11.1	11.1	12.9	15.3	29.5	36.1
M6AVR-M8	6	8	4.8	12.7	14.3	15.3	17.7	32.5	39.9
M6AVR-M10	6	10	4.8	12.7	14.3	15.3	17.7	33.3	40.7
M6AVR-M12	6	12	4.8	14.3	14.3	15.3	17.7	38.9	46.3
M8AVR-M6	8	6	4.8	14.3	15.9	16.2	18.6	32.8	40.3
M8AVR-M10	8	10	6.4	14.3	15.9	16.2	18.6	34.5	42.0
M8AVR-M12	8	12	6.4	14.3	15.9	16.2	18.6	40.1	47.6
M10AVR-M6	10	6	4.8	17.5	17.5	17.2	19.5	34.8	42.4
M10AVR-M12	10	12	8.0	17.5	17.5	17.2	19.5	42.2	49.8
M12AVR-M6	12	6	4.8	20.6	22.2	22.8	22.0	34.8	44.9
M12AVR-M10	12	10	8.0	20.6	22.2	22.8	22.0	36.6	46.7
M12AVR-M16	12	16	10.0	20.6	22.2	22.8	22.0	43.7	53.8
M12AVR-M18	12	18	10.0	20.6	22.2	22.8	22.0	43.7	53.8
M16AVR-M12	16	12	9.0	23.8	25.4	24.4	22.0	42.9	53.0
M18AVR-M12	18	12	9.0	27.0	30.2	24.4	22.0	44.5	54.8
M18AVR-M16	18	16	12.0	27.0	30.2	24.4	22.0	46.0	56.1
M20AVR-M16	20	16	12.0	30.2	31.8	26.0	22.0	47.8	57.9
M20AVR-M18	20	18	14.0	30.2	31.8	26.0	22.0	47.8	57.9
M22AVR-M20	22	20	15.0	30.2	31.8	26.0	22.0	49.3	59.4
M22AVR-M25	22	25	18.0	30.2	31.8	26.0	22.0	54.1	64.2
M25AVR-M25	25	18	14.0	34.9	38.1	31.3	26.5	50.8	63.1
M25AVR-M20	25	25	15.0	34.9	38.1	31.3	26.5	52.3	64.6

Metric Tube to Fractional AVLOK port

Part No.	T (mm)	Tube O.D.		E Min	h	H	F	G	I	L
		in	mm							
M3AVR-2	3	1/8	3.17	2.0	11.1	11.1	12.9	15.3	26.9	33.5
M3AVR-6	3	1/4	6.35	2.3	11.1	11.1	12.9	15.3	29.5	36.1
M6AVR-4	6	1/4	6.35	4.8	12.7	14.3	15.3	17.7	31.8	39.2
M6AVR-5	6	5/16	7.93	4.8	12.7	14.3	15.3	17.7	32.5	39.9
M6AVR-6	6	3/8	9.52	4.8	12.7	14.3	15.3	17.7	33.3	40.7
M6AVR-8	6	1/2	12.70	4.8	14.3	14.3	15.3	17.7	38.9	46.3
M8AVR-6	8	3/8	9.52	6.4	14.3	15.9	16.2	18.6	34.5	42.0
M8AVR-8	8	1/2	12.70	6.4	14.3	15.9	16.2	18.6	40.1	47.6
M10AVR-6	10	3/8	9.52	7.0	17.5	19.1	17.2	19.5	36.6	44.2
M10AVR-8	10	1/2	12.70	8.0	17.5	19.1	17.2	19.5	42.2	49.8
M12AVR-8	12	1/2	12.70	10.0	20.6	22.2	22.8	22.0	42.2	52.3
M12AVR-12	12	3/4	19.05	10.0	20.6	22.2	22.8	22.0	43.7	53.8
M18AVR-12	18	3/4	19.05	15.0	27.0	30.2	24.4	22.0	46.0	56.1
M18AVR-16	18	1	25.40	15.0	27.0	30.2	24.4	22.0	52.3	62.4



All dimensions are for reference only, and are subject to change without prior notice.
 Sizes and types other than those featured above are available on request.



Tube Cap
AVC

Fractional Tubes

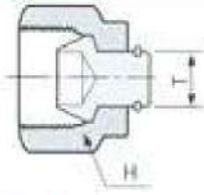
Part No.	Tube O.D.		h		H		F	G	I	L
	in	mm	in	mm	in	mm				
2AV C	1/8	3.17	7/16	11.11	7/16	11.11	12.7	15.2	13.5	20.1
3AV C	3/16	4.76	7/16	11.11	1/2	12.70	13.7	16.0	14.7	21.3
4AV C	1/4	6.35	1/2	12.70	9/16	14.28	15.2	17.8	16.0	23.4
5AV C	5/16	7.93	9/16	14.28	5/8	15.87	16.3	18.5	17.0	24.4
6AV C	3/8	9.52	5/8	15.87	11/16	17.46	16.8	19.3	18.3	25.7
8AV C	1/2	12.70	13/16	20.63	7/8	22.22	22.9	21.8	19.1	29.2
10AV C	5/8	15.87	15/16	23.81	1	25.40	24.4	21.8	19.8	30.0
12AV C	3/4	19.05	1-1/16	26.98	1-1/8	28.57	24.4	21.8	21.3	31.5
14AV C	7/8	22.22	1-3/16	30.16	1-1/4	31.75	25.9	21.8	23.9	34.0
16AV C	1	25.40	1-3/8	34.92	1-1/2	38.10	31.2	26.4	26.2	38.4

Metric Tubes

Part No.	Tube O.D. T	h	H	F	G	I	L
M3AV C	3	11.1	11.1	12.9	15.3	13.5	20.1
M4AV C	4	11.1	12.7	13.7	16.1	14.7	21.3
M6AV C	6	14.3	14.3	15.3	17.7	15.7	23.1
M8AV C	8	14.3	15.9	16.2	18.6	17.0	24.5
M10AV C	10	17.5	19.1	17.2	19.5	19.0	26.6
M12AV C	12	20.6	22.2	22.8	22.0	19.0	29.1
M15AV C	15	23.8	25.4	24.4	22.0	19.8	29.9
M16AV C	16	23.8	25.4	24.4	22.0	19.8	31.9
M18AV C	18	27.0	30.2	24.4	22.0	21.3	31.4
M20AV C	20	30.2	31.8	26.0	22.0	23.9	34.0
M22AV C	22	30.2	31.8	26.0	22.0	23.9	34.0
M25AV C	25	34.9	38.1	31.3	26.5	26.2	38.5



All dimensions are for reference only, and are subject to change without prior notice.
Sizes and types other than those featured above are available on request.



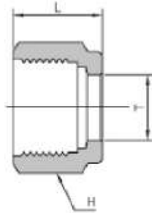
Tube Plug AVP

Fractional Tubes

Part No.	Tube O.D. T		H	
	in	mm	in	mm
2AV P	1/8	3.17	7/16	11.11
3AV P	3/16	4.76	1/2	12.70
4AV P	1/4	6.35	9/16	14.28
5AV P	5/16	7.93	5/8	15.87
6AV P	3/8	9.52	11/16	17.46
8AV P	1/2	12.70	7/8	22.22
10AV P	5/8	15.87	1	25.40
12AV P	3/4	19.05	1-1/8	28.57
14AV P	7/8	22.22	1-1/4	31.75
16AV P	1	25.40	1-1/2	38.10

Metric Tubes

Part No.	Tube O.D. T (mm)	H
M3AV P	3	11.1
M4AV P	4	12.7
M6AV P	6	14.3
M8AV P	8	15.9
M10AV P	10	19.1
M12AV P	12	22.2
M15AV P	15	25.4
M16AV P	16	25.4
M18AV P	18	30.2
M20AV P	20	31.8
M22AV P	22	31.8
M25AV P	25	38.1



Nut AVN

Fractional Tubes

Part No.	Tube O.D. T		H		L
	in	mm	in	mm	
2AVN	1/8	3.17	7/16	11.11	11.9
3AVN	3/16	4.76	1/2	12.70	11.9
4AVN	1/4	6.35	9/16	14.28	12.7
5AVN	5/16	7.93	5/8	15.87	13.4
6AVN	3/8	9.52	11/16	17.46	14.2
8AVN	1/2	12.70	7/8	22.22	17.5
10AVN	5/8	15.87	1	25.40	17.5
12AVN	3/4	19.05	1-1/8	28.57	17.5
14AVN	7/8	22.22	1-1/4	31.75	17.5
16AVN	1	25.40	1-1/2	38.10	20.6

Metric Tubes

Part No.	Tube O.D. T (mm)	H	L
M3AVN	3	11.1	11.9
M4AVN	4	11.1	11.9
M6AVN	6	14.3	12.7
M8AVN	8	15.9	13.4
M10AVN	10	19.1	15.1
M12AVN	12	22.2	17.5
M15AVN	15	25.4	17.5
M16AVN	16	25.4	17.5
M18AVN	18	30.2	17.5
M20AVN	20	31.9	17.5
M22AVN	22	31.9	17.5
M25AVN	25	38.1	20.6



All dimensions are for reference only, and are subject to change without prior notice.
 Sizes and types other than those featured above are available on request.



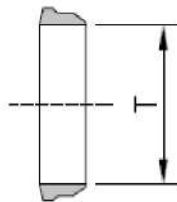
Front Ferrule AVFF

Fractional Tubes

Part No.	Tube O.D.	
	in	mm
2AVFF	1/8	3.17
3AVFF	3/16	4.76
4AVFF	1/4	6.35
5AVFF	5/16	7.93
6AVFF	3/8	9.52
8AVFF	1/2	12.70
10AVFF	5/8	15.87
12AVFF	3/4	19.05
14AVFF	7/8	22.22
16AVFF	1	25.40

Metric Tubes

Part No.	Tube O.D. T (mm)
M3AVFF	3
M4AVFF	4
M6AVFF	6
M8AVFF	8
M10AVFF	10
M12AVFF	12
M15AVFF	15
M16AVFF	16
M18AVFF	18
M20AVFF	20
M22AVFF	22
M25AVFF	25



Back Ferrule AVBF

Fractional Tubes

Part No.	Tube O.D.	
	in	mm
2AVBF	1/8	3.17
3AVBF	3/16	4.76
4AVBF	1/4	6.35
5AVBF	5/16	7.93
6AVBF	3/8	9.52
8AVBF	1/2	12.70
10AVBF	5/8	15.87
12AVBF	3/4	19.05
14AVBF	7/8	22.22
16AVBF	1	25.40

Metric Tubes

Part No.	Tube O.D. T (mm)
M3AVBF	3
M4AVBF	4
M6AVBF	6
M8AVBF	8
M10AVBF	10
M12AVBF	12
M15AVBF	15
M16AVBF	16
M18AVBF	18
M20AVBF	20
M22AVBF	22
M25AVBF	25



All dimensions are for reference only, and are subject to change without prior notice.
 Sizes and types other than those featured above are available on request.